



Duke  
UNIVERSITY  
CHAPEL

BRIDGING FAITH & LEARNING

SERVICE OF WORSHIP

Christmas Eve

Tuesday, December 24, 2024, 8:00 p.m.



Lorenzo Monaco (Piero di Giovanni), *The Nativity*, ca. 1406–10.

Christmastide (named after the principal celebration of the “Christ Mass”) is the twelve-day festival during which Christians celebrate the birth of the Christ child in Bethlehem over 2,000 years ago. This vulnerable infant, long awaited and yet still a surprise, is the incarnation of God on earth. As we share gifts with our friends and families this season, we seek to capture the joy and wonder of the original gift of Christmas: Jesus Christ, coming into a broken world to dwell among us as the Son of God, our Savior.

# Gathering

## Carillon

### Brass Prelude

Six Christmas Carols

arr. Rob Roy MacGregor

God Rest Ye Merry, Gentlemen  
Greensleeves  
Once in Royal David's City  
We Three Kings  
O Tannenbaum  
Angels We Have Heard on High

Wexford Carol

arr. Charles Evans

### Greeting and Call to Worship

\*Gathering Hymn | UMH 240

Hark! The Herald Angels Sing

MENDELSSOHN  
arr. Václav Nelhýbel

\*Prayer of Confession and Words of Assurance | In unison:

**Almighty God, who sent a star to guide the magi to the holy child Jesus: we confess that we have not followed the light of your word. We have not searched for signs of your love in the world, or trusted good news to be good. We have failed to praise your Son's birth, and refused his peace on earth. We have expected little, and hoped for less. Forgive our doubt, and renew in us all fine desires, so we may watch and wait and once more hear the glad story of our Savior, Jesus Christ the Lord. Amen.**

The minister speaks words of assurance.

\*Peace | All exchange signs and words of God's peace.

Minister: The peace of Christ be with you.

People: **And also with you.**

\*All rise as able

## Proclamation

Prayer for Illumination | In unison:

**Almighty God, as we prepare with joy to celebrate the gift of the Christ child, embrace the earth with your glory and be for us a living hope; in Jesus Christ our Lord. Amen.**

Old Testament Lesson | OT page 600 in pew Bibles.

Isaiah 9:2–7

Lector: The word of the Lord.

**People: Thanks be to God.**

## Voluntary

Ríu Ríu Chíu

Spanish *villancico*  
arr. Mitchell Eithun

\*Gradual Hymn | UMH 238. Stanzas 1 and 2. Turn to face the Gospel procession.

Angels We Have Heard on High

GLORIA  
arr. Nelhýbel

\*Gospel Lesson | NT pages 54–55 in pew Bibles.

Luke 2:1–20

Lector: The word of the Lord.

**People: Thanks be to God.**

\*Gradual Hymn | UMH 238. Stanzas 3 and 4. Turn to face the Gospel procession.

Angels We Have Heard on High

GLORIA  
arr. Nelhýbel

## Sermon

For a Child is Born

# Response

## Call to Prayer

Minister: The Lord be with you.

People: **And also with you.**

Minister: Let us pray.

Prayers of the People | The congregation responds to each petition:

People: **Hear our prayer.**

## Offertory Music

Ding, Dong, Merrily On High

BRANLE DE L'OFFICIAL

arr. Larry Sue

## \*Doxology

GREENSLEEVES



So bring him in - cense, gold, and myrrh; come peas - ant,



king, to own him. The King of kings sal - va - tion brings; let



lov - ing hearts en - throne him. This, this is Christ the



king, whom shep - herds guard and an - gels sing; haste, haste to



bring him laud, the babe, the son of Mar - y!

# Thanksgiving and Holy Communion

## \*The Great Thanksgiving

Minister: The Lord be with you.

**People: And also with you.**

Minister: Lift up your hearts.

**People: We lift them up to the Lord.**

Minister: Let us give thanks to the Lord our God.

**People: It is right to give our thanks and praise.**

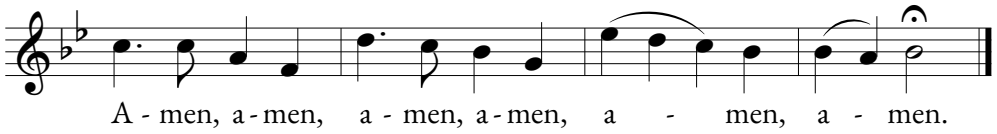
Minister: ... give us such joy and peace in your company that our hearts join the angels in the Christmas sky and around your eternal throne singing their hymn of unending praise:



Minister: Great is the mystery of faith.



Minister: ...all honor and glory are yours, now and forever.



**\*The Lord's Prayer** | All are encouraged to pray the Lord's Prayer in the language of their choosing.

**Our Father, who art in heaven, hallowed be thy name.  
Thy kingdom come, thy will be done on earth as it is in heaven.  
Give us this day our daily bread.  
And forgive us our trespasses,  
as we forgive those who trespass against us.  
And lead us not into temptation, but deliver us from evil.  
For thine is the kingdom, and the power, and the glory, forever.  
Amen.**

**Sharing of the Bread and Wine** | All who love Christ, earnestly repent of their sins, and seek to be at peace with God and neighbor are invited to receive Communion. Bread and wine are used for Communion. After a server places bread in your hands, you may receive wine by dipping your bread into the chalice. If you desire gluten-free bread or grape juice, or to drink from a common cup, these are available from servers at the front near Memorial Chapel and near the back opposite the attendant's desk. If you will not receive Communion, you are welcome to come forward to receive a blessing, indicated by crossing your arms over your chest.

### Voluntary

Joy to the World

ANTIOCH  
arr. Mitchell Eithun

Communion Hymn | UMH 218

It Came Upon the Midnight Clear

CAROL

**\*Post-Communion Prayer**

# Sending Forth

\*Benediction

\*Sending Hymn | UMH 246

Joy to the World

ANTIOCH

arr. Robert Hobby

Postlude

My Spirit Be Joyful

Johann Sebastian Bach

(1685–1750)

arr. Harry Herfort

Carillon

# TODAY IN WORSHIP

## Presiding Ministers

Lynn Holmes ..... *Interim Pastor, Congregation at Duke Chapel*  
Bruce Puckett ..... *Assistant Dean, Duke University Chapel*

## Preacher

Luke A. Powery ..... *Dean, Duke University Chapel*

## Lectors

Gregory Beck ..... *Member, Congregation at Duke Chapel*  
Meg Greto ..... *Intern for Worship and Student Engagement; Divinity '26*

## Musicians

Zebulon Highben ..... *Director of Chapel Music, Duke University Chapel*  
Chad Fothergill ..... *Chapel Organist, Duke University Chapel*  
Mitchell Eithun ..... *Conductor, Bell Durham;*  
*Chapel Carillonneur, Duke University Chapel*  
Jerri Bland ..... *Bell Durham*  
E. Hunter Brooks ..... *Clarinet, Bell Durham*  
Lesley Chao ..... *Bell Durham*  
Philip Cress ..... *Bell Durham*  
Paul Neebe ..... *Trumpet, Amalgam Brass*  
Tim Altman ..... *Trumpet, Amalgam Brass*  
Abigail Pack ..... *Horn, Amalgam Brass*  
Mike Kris ..... *Trombone, Amalgam Brass*  
Steve Truckenbrod ..... *Tuba, Amalgam Brass*

## Head Ushers

Ken Arneson ..... *Member, Congregation at Duke Chapel*  
James Ferguson ..... *Member, Congregation at Duke Chapel*

**Guest Bell Ensemble** | Bell Durham was founded in September 2023 and is Durham's first community handbell ensemble. The goal of this ensemble is to provide high-caliber handbell music at local events and venues and to promote the art of handbells in Durham and beyond. The ensemble is led by Mitchell Eithun, who serves at Duke Chapel as a Chapel Carillonneur.

**Liturgical Acknowledgments | Prayer of Confession.** *The Worshipbook*, published by the Presbyterian Church (U.S.A.). **So Bring Him Incense, Gold, and Myrrh (Doxology).** Text: William C. Dix (1837–1898). Music, GREENSLEEVES: English ballad, 16th cent. Public domain.

**Today's Flowers |** The Advent Wreath is made possible by the Elizabeth Lucina Gotham Memorial Endowment, established by Dr. and Mrs. James H. Semans in loving memory of Elizabeth Gotham. The interior decorations and the wreaths on either side of the front entrance of the Chapel are given to the glory of God in celebration of the Christmas season by Dr. and Mrs. James G. Ferguson, Jr.

**Christmas Eve Offering |** All of today's cash offerings and checks written to Duke University Chapel will go to support the relief efforts from Hurricane Helene in Western North Carolina. The offerings will be sent to the United Methodist Committee on Relief, where 100% of the funds will be used to help those in need. Send checks to: Duke University Chapel, Box 90974, Durham, NC 27708-0974. You are invited to give online at [chapel.duke.edu/offering](https://chapel.duke.edu/offering).

## ENGAGE

---

**Restrooms in Divinity School** | Public restrooms are available in the Divinity School. To access them, exit the Chapel through the main front doors, turn to the left, and enter the Divinity School. Restrooms are along the hallway in the Divinity School.

**Duke Chapel Email Newsletter** | The Chapel publishes a weekly newsletter with news about worship services, concerts, special events, and more. Signing up for these email updates is a great way to get more involved in the life of the Chapel: [chapel.duke.edu/email](http://chapel.duke.edu/email).

**Holiday Hours** | The Chapel is open daily from 10:00 a.m. to 8:00 p.m. except for Christmas Day when it is closed all day, as well as December 31 and January 1 when it closes at 5:00 p.m. The Chapel also closes to the public for weddings and other private ceremonies, so before planning a visit, please check [chapel.duke.edu/events](http://chapel.duke.edu/events).

**Students at Duke Chapel** | Students are the Chapel's primary focus and community. The Chapel seeks to serve each student, bridging their faith and learning through individual formation, communal worship, acts of service on campus and in the broader world, and caring support, regardless of their beliefs. Learn about Chapel Scholars, Religious Life groups, Chapel choirs, Student Preacher applications, an alternative spring break trip, the Say the Thing initiative, and more at [chapel.duke.edu/students](http://chapel.duke.edu/students).

**Community Ministry** | The Chapel stands as a living witness in Durham and beyond. By being a faithful witness to the all-inclusive love of God, the Chapel joins in the important work of respecting the dignity of every human being, especially in the areas of affordable housing, education, and mass incarceration. Learn more at [chapel.duke.edu/community](http://chapel.duke.edu/community).

**Worship at Duke Chapel** | On Sundays at 11:00 a.m., join us in worship that offers stirring preaching, inspiring sacred music, and faithful prayer. Held year-round amid the beautiful, soaring architecture of Duke Chapel, this interdenominational Christian service is characterized by vibrant faith, intellectual depth, diverse cultural expressions, and a welcoming community. Learn more about all of the Chapel's services at [chapel.duke.edu/worship](http://chapel.duke.edu/worship).

## ENGAGE

---

**Epiphany Lessons and Carols** | A worship service on Sunday, January 5, at 4:00 p.m. will mark the twelfth night of Christmas and the beginning of the season of Epiphany. Based on the formula made famous by the Christmas Lessons and Carols from King's College, Cambridge, this service follows a similar pattern of readings, choral anthems, and congregational hymns.

**Congregational Ministries** | The Congregation at Duke University Chapel is the interdenominational church home for people who consider Duke Chapel to be their primary place of worship. Recognizing that the Christian life is more than a Sunday morning experience, members of the Congregation long to deepen their relationships with God, each other, and their neighbors. By providing opportunities for education, service, and fellowship, the Congregation helps participants strengthen these precious relationships. The Congregation welcomes singles, couples, and families who are students, faculty, staff, and community members to join the church to grow together in Christ. To sign up for the Congregation's weekly newsletter, please email [congregation@duke.edu](mailto:congregation@duke.edu).

**Sacred Choral Clinic with Dr. Pearl Shangkuan** | Dr. Pearl Shangkuan, National President-Elect of the American Choral Directors Association (ACDA), will lead a sacred choral clinic at Duke Chapel on Saturday, January 25, 2025, from 9:00 a.m. to 12-noon. Church choir directors and singers are invited to register for this special event with Dr. Shangkuan, professor emerita of music at Calvin University in Grand Rapids, Michigan. Participants will sing with the Duke Chapel Choir and other choirs from around North Carolina and surrounding states, as Dr. Shangkuan teaches vocal techniques and introduces choral repertoire appropriate for the upcoming Lent and Easter seasons. Learn more and register at [chapel.duke.edu/choralclinic](http://chapel.duke.edu/choralclinic).

**Sunday Morning Classes** | Sunday morning Christian Education classes are available for all ages. These classes are offered from 9:45–10:45 a.m., with coffee and refreshments provided at 9:30 a.m. Classes meet in the lowest level of the Westbrook building. They will resume on Sunday, January 7. New participants are welcome at any time. Please contact [congregation@duke.edu](mailto:congregation@duke.edu) for additional information.

## ACCESSIBILITY

---

Hearing assistance units, as well as large-print worship guides and hymnals, are available at the AV console in the rear of the Chapel. There, you can also find directions to download a listen-assist app on your phone. Please let us know if you need other accommodations by approaching a minister or usher, or email us at [dukechapel@duke.edu](mailto:dukechapel@duke.edu).

## LET'S KEEP IN TOUCH

---

We would like to get to know you. What are your questions? What is your story? Take a moment to fill out a very brief form and a Chapel minister or other staff member will contact you soon. Scan the QR code or visit [chapel.duke.edu/connect](http://chapel.duke.edu/connect).



Duke  
UNIVERSITY  
CHAPEL



*The Congregation  
at Duke Chapel*

[chapel.duke.edu](http://chapel.duke.edu)

919-681-9488

401 Chapel Drive  
Campus Box 90974  
Durham, NC 27708

[dukechapel@duke.edu](mailto:dukechapel@duke.edu)

Connect with us



@DukeChapel  
#FindSanctuary

[congregation.chapel.duke.edu](http://congregation.chapel.duke.edu)

919-684-3917

The Congregation at Duke University Chapel joyfully welcomes all persons regardless of age, race, class, origin, sexual orientation, gender identity, or any other distinction and invites membership and participation in all of its ministries.

Please email [congregation@duke.edu](mailto:congregation@duke.edu) to receive the weekly eNews.