



Duke  
UNIVERSITY  
CHAPEL

# Service of Worship

First Sunday in Advent

November 30, 2014

Eleven o'clock in the morning

~ Bridging Faith and Learning ~

---



*"Bright Candle in the Darkness," by Markus Merz.*

Today we celebrate the first Sunday in Advent. Advent is Latin for "coming." It celebrates the most important news about the past and the most important news about the future. Christ has come; and Christ is coming back. Just as the coming of Christ as a baby in Bethlehem took everyone by surprise, although it had long been predicted, so the coming of Christ in glory will no doubt take everyone by surprise, although it too has long been predicted. In Duke Chapel, we place a large wreath in the center aisle to represent the four Sundays of Advent and the central moment of Christmas. The first Sunday of Advent commemorates the longing of Israel for the Kingdom of God.

*The congregation is asked to remain silent  
during the prelude as a time of prayer and meditation.  
The Chapel welcomes families with children. If at any time during the service your child  
needs a place for active play, please know there is a nursery in the Chapel basement.*

## GATHERING

CARILLON

ORGAN PRELUDE

The World Awaiting the Savior, Op. 23  
(from *Passion Symphony*)

Marcel Dupré  
(1886–1971)

GREETING AND ANNOUNCEMENTS

\*OPENING PROCESSION: HYMN 196

Come, Thou Long-Expected Jesus

HYFRYDOL

\*PRAYER OF CONFESSION AND WORDS OF ASSURANCE (*in unison*)

God of the future, you are coming in power to bring all  
nations under your rule. We confess that we have not expected  
your kingdom; we live casual lives, ignoring your promised  
judgment. We accept lies as truth, exploit neighbors, abuse the  
earth, and refuse your justice and peace. In your mercy, forgive  
us. Grant us wisdom to welcome your way, and to seek things  
that will endure when Christ comes to judge the world. Amen.

*The minister speaks words of assurance.*

\*PEACE

(*All exchange signs and words of God's peace.*)

## PROCLAMATION

PRAYER FOR ILLUMINATION (*in unison*)

Almighty God, as your kingdom dawns, and as we hear your  
word, turn us from the darkness of sin to the light of holiness,  
that we may be ready to meet you in our Lord and Savior,  
Jesus Christ. Amen.

OLD TESTAMENT LESSON—Isaiah 64:1–9 (*OT page 652-53 in the pew Bible*)

Lector: This is the word of the Lord.

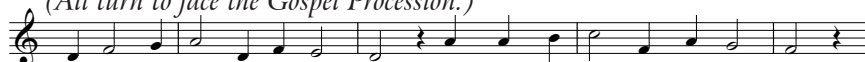
People: Thanks be to God.

\*GRADUAL HYMN (*stanzas 1–2*)

O Savior, Rend the Heavens Wide

O HEILAND REISS DIE HIMMEL AUF

(*All turn to face the Gospel Procession.*)



1. O Sav - ior, rend the heav - ens wide; Come down, come down with might - y stride;
2. O Morn - ing Star, O ra - dant Sun, When will our hearts be - hold your dawn?



Un-lock the gates, the doors break down; Un - bar the way to heav - en's crown.  
O Sun, a - rise; with - out your light we grope in gloom and dark of night.

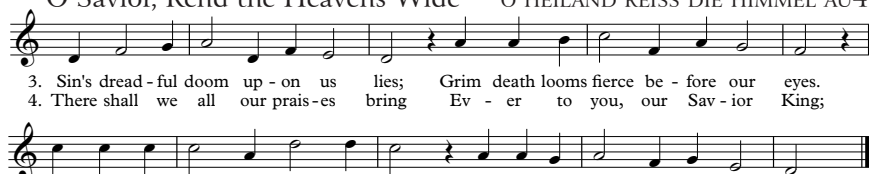
\*GOSPEL LESSON—Mark 13:24–37 (NT page 47-48)

Lector: This is the word of the Lord.

People: Thanks be to God.

\*GRADUAL HYMN (stanzas 3–4)

O Savior, Rend the Heavens Wide O HEILAND REISS DIE HIMMEL AU4



3. Sin's dread - ful doom up - on us lies; Grim death looms fierce be - fore our eyes.  
4. There shall we all our prais-es bring Ev - er to you, our Sav - ior King;

Oh, come, lead us with might - y hand from ex - ile to our pro-mised land.  
There shall we laud you and a - dore for - ev - er and for - ev - er - more.

Text: German spiritual song, Köln, 1623; tr. Martin L. Seltz 1909-1967  
Tune: Gesangbuch, Augsburg, 1666

O Heiland Reiss Die Himmel Auf  
LM

SERMON—Keep Awake!

RESPONSE

CALL TO PRAYER

Minister: The Lord be with you.

People: And also with you.

Minister: Let us pray.

PRAYERS OF THE PEOPLE

(The congregation responds to each petition: “Hear our prayer.”)

*This morning we give thanks for Duke’s Sexual Assault Support services. We are grateful for its support, counseling, and ongoing care for all those who are survivors of sexual assault.*

*In honor of World AIDS Day, we remember with gratitude all who are creating homes of hospitality for those living with HIV/AIDS.*

BRASS OFFERTORY

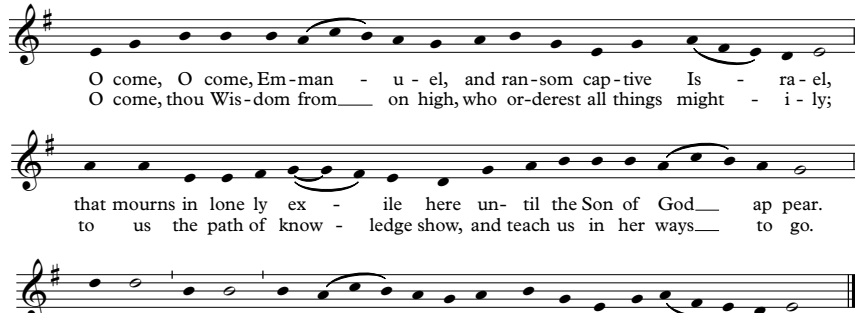
My Spirit Be Joyful

Johann Sebastian Bach  
(1685-1750)

arr. Harry Herforth

\*DOXOLOGY

VENI EMMANUEL



O come, O come, Em-man - u - el, and ran-som cap-tive Is - ra - el,  
O come, thou Wis-dom from on high, who or-derest all things might - i - ly;

that mourns in lone ly ex - ile here un- til the Son of God ap pear.  
to us the path of know - ledge show, and teach us in her ways to go.

Re-joice! Re-joice! Em - man - u - el shall come to thee, O Is - ra - el!

## THANKSGIVING AND COMMUNION

### \*THE GREAT THANKSGIVING

*(Musical Setting A, found on page 17 in the hymnal)*

### \*THE LORD'S PRAYER (number 895 in the hymnal, in unison)

### SHARING OF THE BREAD AND WINE

*All who love Christ, earnestly repent of their sins, and seek to be at peace with God and neighbor are invited to receive communion. Wine is used for communion. If you would prefer to receive grape juice, it is available upon request at the communion station near the main entrance of the Chapel, on the pulpit side. If you have a gluten allergy, those serving communion nearest to the Memorial Chapel will be ready to serve you gluten-free wafers and wine on request. You may also come forward to receive a blessing, indicated by crossing your arms over your chest.*

*If you would like to receive individual anointing with oil and prayers for healing, ministers will be in the Memorial Chapel during communion.*

### MUSIC DURING DISTRIBUTION

#### HYMN 720 (sung by all)

Wake, Awake, for Night Is Flying

WACHET AUF

#### BRASS COMMUNION ANTHEM

Simple Gifts

Traditional Shaker  
arr. Jari Villanueva

### \*PRAYER AFTER COMMUNION

## SENDING FORTH

### \*BENEDICTION

### \*CLOSING PROCESSION: HYMN 718

Lo, He Comes with Clouds Descending

HELMSLEY

### ORGAN POSTLUDE

Toccata on VENI EMMANUEL

Andrew Carter  
(b. 1939)

### CARILLON

*\*All who are able may stand.*

## THIS WEEK AT DUKE CHAPEL

COMMUNION AND HEALING - Tuesday at 5:15 p.m. in the Memorial Chapel

MID-WEEK PRAYER - Wednesday at noon in the Memorial Chapel

CHORAL VESPERS - Thursday at 5:30 p.m. in Goodson Chapel

---

## MINISTRY OF WORSHIP

Presiding Ministers

The Rev. Dr. Carol Gregg  
The Rev. Brad Troxell

Preacher

Dr. Christy Lohr Sapp

Lectors

Mr. Jack McCallus  
*Member, Congregation at Duke Chapel*

Ms. Leisa Dennehy  
*Member, Congregation at Duke Chapel*

Choir Director

Dr. Rodney Wynkoop

Organist

Mr. Christopher Jacobson

Ministers of Anointing

The Rev. Brad Troxell  
The Rev. Meghan Benson

Head Ushers

Dr. James Ferguson and Mr. Rick Wilfong

Carillonneur

Mr. J. Samuel Hammond

---

### DOXOLOGY IN ADVENT: O COME, O COME EMMANUEL INVOKING THE NAME OF JESUS: PRAYERS OF ADVENT

There are seven great Advent prayers (antiphons) that have historically been prayed during the last week before Christmas Eve since the seventh century. Each Antiphon begins with “O” and addresses Jesus with a unique name, which comes from the prophecies of Isaiah in the Old Testament.

Each O Antiphon begins with an invocation of the expected Messiah, followed by praise of him under one of his historic Latin names. When read backwards from the bottom up, they form an acrostic for the Latin “Ero Cras” which means, “Tomorrow I shall be with you.” Today the O Antiphons are most familiar to us in the hymn “O come, O come Emmanuel” sung to the tune VENI EMMANUEL.

Sapientia—O come, thou wisdom from on high...

Adonai—O come, O come, thou Lord of might...

Radix Jesse—O come, thou Branch of Jesse’s tree...

Clavis David—O come, thou key of David...

Oriens—O come, thou Dayspring from on high...

Rex Gentium—O come, Desire of nations...

Emmanuel—O come, O come, Emmanuel...

As the O Antiphons (and subsequently the stanzas of VENI EMMANUEL) tell the Advent story of Christ’s coming, we will sing this great hymn throughout the season of Advent, two stanzas per week. Using this pattern as our Doxology, we will sing the story of God’s coming to dwell with us not all at once, but progressively and patiently over the course of four Sundays as we present him our gifts.

## CHAPEL ANNOUNCEMENTS

**TODAY'S FLOWERS**—The wreaths on both sides of the front entrance of the Chapel, the Advent Wreath, and the red poinsettias that adorn the balustrade are made possible by the Elizabeth Lucina Gotham Memorial Endowment, established by Dr. and Mrs. James H. Semans in loving memory of Elizabeth Gotham.

**TODAY'S OFFERING**—All of today's cash offerings and undesignated checks will be used to underwrite the costs for undergraduate students going on the Chapel's Spring Break mission trips. Duke Chapel PathWays provides mission trip opportunities for students who are interested in spending their Spring Break in service and reflection.

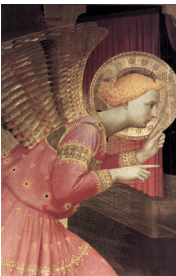
**ORGAN PRELUDE**—Today's prelude for Advent 1 comes from a larger organ symphony depicting the life of Christ. Through its use of jagged rhythms and turbulent chords the movement this morning depicts the world in chaos before the coming of Jesus. The plainsong *Jesu redeemptor omnium* (Jesus, redeemer of us all) triumphs over the tumult and prepares us for the opening hymn, "Come Thou Long-Expected Jesus."

**PARTICIPATING IN WORSHIP**—If you would like to participate in Chapel worship over the holidays, the Chapel would welcome any who are interested in reading scripture, serving communion, ushering, or carrying the cross and candles in worship. Training is provided. Please contact director of worship, the Rev. Meghan Benson, at [meghan.benson@duke.edu](mailto:meghan.benson@duke.edu) if you are interested.

### CHORAL VESPERS

#### SERVICE OF LESSONS AND CAROLS

This Thursday, December 4, at 5:30 p.m., the Vespers Ensemble will lead an Advent service of Lessons and Carols in Goodson Chapel at Duke Divinity School. This 45-minute candlelight service will feature scripture, hymns, and anthems focusing on the Advent season. Seasonal music will be played by Chapel Organist Christopher Jacobson beginning at 5:15 p.m.



### Messiah

The Duke Chapel Choir, soloists, and orchestra will perform Handel's *Messiah* on December 5 at 7:30 p.m., December 6 at 2:00 p.m., and December 7 at 3:00 p.m., in Duke Chapel. Tickets are \$20 for adults, \$5 for non-Duke students, and free for the first 300 Duke students. Tickets are available at the Duke Box Office by calling 684-4444 or at [www.tickets.duke.edu](http://www.tickets.duke.edu)



THE CONGREGATION AT DUKE UNIVERSITY CHAPEL  
919-684-3917 • [www.congregation.chapel.duke.edu](http://www.congregation.chapel.duke.edu)

*The following Congregation opportunities are open to all.*

**SUNDAY EDUCATION**—All Sunday morning classes meet in the lowest level of Duke Divinity School from 9:45–10:45 a.m. New participants are welcome at any time. Classes include:

- *Wee Praise* for infants through children age 3 with parents or caregivers in 0014 Westbrook
- *Godly Play* for 4-year olds through 5th graders in 0050 Langford
- *Youth Sunday School* for youth in 6th–12th grades in 0013 Westbrook
- *Adult Bible Study* focused on the theme of worship in 0011 Westbrook
- *Adult Forum*: Next Sunday, December 7, Valerie Raleigh Yow, Ph.D., author of *Betty Smith: Life of the Author of A Tree Grows in Brooklyn*, and playwright and former history professor and Theresa Yuschok, M.D., will present “A Tree Grows in Brooklyn—and Chapel Hill” in 0012 Westbrook.

**ANGEL TREE**—In partnership with Duke Community Service Center’s Project Share, the Mission Committee invites donations of new gifts to be distributed to economically disadvantaged citizens in Durham during the holiday season. On November 23 and 30, please select the name of a child or an adult for whom to provide gifts from the Christmas Angel bulletin board as you leave the Chapel after worship. Wrapped gifts are to be returned to the Chapel on Wednesday, December 3.

**PLAYGROUP**—The next Playgroup outing for young children and their parents (or caregivers) is scheduled for Monday, December 1, at 9:00 a.m. at the Defy Gravity Trampoline Park in Durham. For more information, please contact Anna Shea at [annacollins2@hotmail.com](mailto:annacollins2@hotmail.com) or 919-597-1713.

**FEED SOME MUSICIANS**—To show our deep appreciation for the Chapel Choir, the Congregation is providing light refreshments for the choir during intermission at their *Messiah* performance on Friday, December 5th. You can show your gratitude by either providing finger foods or small baked goods, or by helping to serve. Please contact Cindy Gass at [cynthia.gass@gmail.com](mailto:cynthia.gass@gmail.com) or 919-383-3311 to let her know you would like to contribute.

**ZOE GIFT MARKET**—The Youth of the Congregation will be offering opportunities to support ZOE, a ministry that empowers African orphans to become self-sufficient in three years. The gift market will be available Sunday, December 7 and 14. For more information, contact Brad Troxell at [brad.troxell@duke.edu](mailto:brad.troxell@duke.edu).

**LECTIONARY BIBLE STUDY**—All are welcome to enjoy a study of the lectionary texts on the first Friday of the month at 10:00 a.m. in the Library at The Forest at Duke. On December 5, Carol Gregg will be leading a study of Isaiah 40:1–11.



## DUKE UNIVERSITY CHAPEL

*Duke Chapel is a grand building, suitable for hosting major events in the life of the University and its members; it acts as a moderator for the diversity of religious identity and expression on campus; and it is a Christian church of an unusually interdenominational character, with a tradition of stirring music, preaching, and liturgy. We welcome you to our life of worship, learning, dialogue, and service.*

**www.chapel.duke.edu • Box 90974, Durham, NC 27708 • 919-684-2572**

### FOR WORSHIPERS & VISITORS

† Prayer requests may be placed in the prayer box located by the Memorial Chapel.

† For a tour of Duke Chapel, meet today's docent near the front steps of the Chapel following the service.

† Hearing assist units and a Braille hymnal are available at the attendant's desk at the entry way of the Chapel. See the Chapel attendant if you would like to use one of our large-print Bibles or hymnals for the worship service this morning.

### FOR FAMILIES & CHILDREN

† Children 4 and younger are welcome to visit the nursery (capacity limited), located in the Chapel basement, beginning at 10:50 a.m. each week. Pagers are available for parents to keep with them during worship. Parents needing a place to feed, quiet, or change infants are also welcome.

† Activity Bags are available at the rear of the Chapel for children 5 or younger. Please return the bags at the end of the service. Children's bulletins are available from the ushers.

*We invite you to consider joining the Congregation at Duke Chapel. The Congregation is an interdenominational church with a variety of vibrant ministries, including discipleship and spiritual formation (for children, youth, and adults), mission and outreach, and pastoral care. If you would like to receive the weekly eNews from the Congregation or have any questions, please email [congregation@duke.edu](mailto:congregation@duke.edu) or call 919-684-3917.*

## STAFF OF DUKE UNIVERSITY CHAPEL

The Rev. Dr. Luke Powery

*Dean of the Chapel*

### Ministry

Dr. Christy Lohr Sapp

*Associate Dean for Religious Life*

The Rev. Meghan Benson

*Director of Worship*

Dr. Adam Hollowell

*Director of Student Ministry*

The Rev. Bruce Puckett

*Director of Community Ministry*

Mr. Joshua Lazard

*C. Eric Lincoln Minister for Student Engagement*

Ms. Gerly Ace

*Staff Assistant for Student Ministry*

### Music

Dr. Rodney Wynkoop

*Director of Chapel Music*

Dr. Robert Parkins

*University Organist*

Mr. Christopher Jacobson

*Chapel Organist*

Dr. Brian Schmidt

*Assistant Conductor and Administrative Coordinator of Chapel Music*

Mr. John Santoianni

*Curator of Organs and Harpsichords*

Mr. J. Samuel Hammond

*University Carillonneur*

Mr. Michael Lyle

*Staff Assistant for Chapel Music*

### Administration

Ms. Beth Gettys Sturkey

*Director of Development*

Ms. Joni Harris

*Assistant to the Dean*

Ms. Adrienne Koch

*Communications Specialist*

Mr. James Todd

*Multimedia Manager for Media Ministry*

Ms. Sara Clark

*Chapel Events and Wedding Coordinator*

Ms. Lisa Moore

*Accounting Specialist and Office Coordinator*

Mr. Andrew Klumpp

*Visitor Relations Specialist*

Ms. Lucy Hart Peaden Taylor

*Staff Assistant for Development*

Mr. Oscar Dantzler and Ms. Beverly Jordan

*Housekeepers*

### Staff of the Congregation at Duke University Chapel

The Rev. Dr. Carol Gregg

*Pastor*

The Rev. Brad Troxell

*Associate Pastor*

Ms. Phyllis Snyder

*Children's Pastor*

Mr. Nelson Strother

*Administrative Assistant*