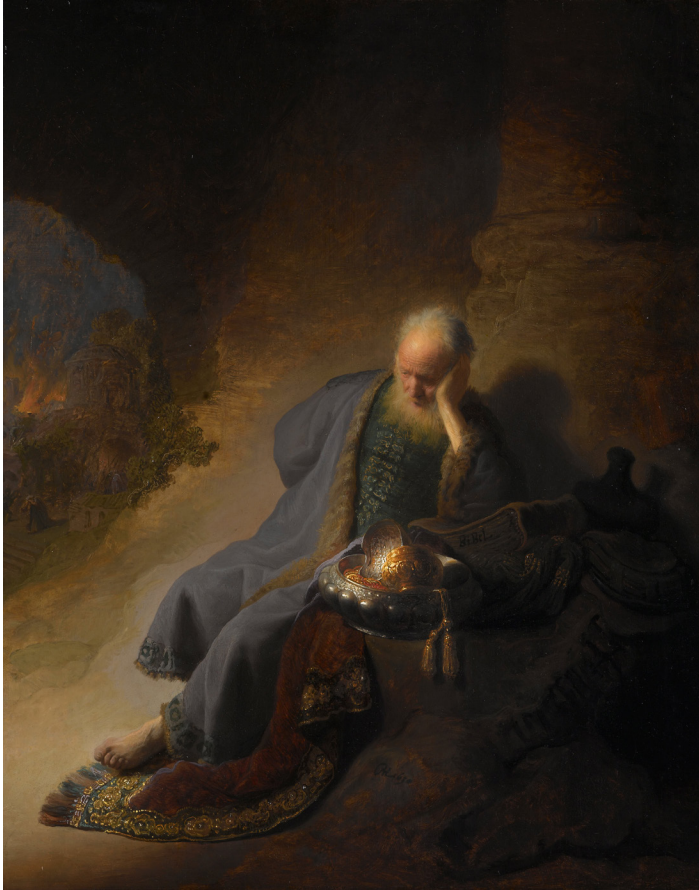




Duke
UNIVERSITY
CHAPEL

BRIDGING FAITH & LEARNING

SERVICE OF WORSHIP
Fifteenth Sunday After Pentecost
Sunday, September 21, 2025, 11:00 a.m.



Rembrandt Harmenszoon van Rijn,
Jeremiah lamenting the destruction of Jerusalem, 1630.

Today's Old Testament reading contains a lament from the prophet Jeremiah. In this reading, Jeremiah decries the state of Judah, naming his own brokenness and mourning. The Gospel reading contains a parable from Jesus about a dishonest manager. In it, Jesus teaches that a person's character is revealed to be either faithful or dishonest by how they steward money, no matter whether it is a little or a lot. He concludes by saying, "You cannot serve God and wealth."

Gathering

Carillon

Prelude

Praeludium in E, BuxWV 141

Dieterich Buxtehude
(c. 1637–1707)

Greeting and Call to Worship

*Gathering Hymn | UMH 185

When Morning Gilds the Skies

LAUDES DOMINI

*Prayer of Confession and Words of Assurance | In unison:

Most merciful God, we confess that we have sinned against you in thought, word, and deed, by what we have done, and by what we have left undone. We have not loved you with our whole heart; we have not loved our neighbors as ourselves. We are truly sorry, and we humbly repent. For the sake of your Son Jesus Christ, have mercy on us and forgive us; that we may delight in your will, and walk in your ways to the glory of your name. Amen.

The minister speaks words of assurance.

*Peace | All exchange signs and words of God's peace.

Minister: The peace of Christ be with you.

People: **And also with you.**

Proclamation

Prayer for Illumination | In unison:

Almighty God, fount of all wisdom, crown of all knowledge; give us eyes to see and minds to understand your marvelous works, that we may know you through your handiwork and use your creations to your glory; through Jesus Christ our Lord. Amen.

*All rise as able

Old Testament Lesson | OT page 667 in pew Bibles.

Jeremiah 8:18–9:1

Lector: The word of the Lord.

People: **Thanks be to God.**

Anthem

God's Got the Whold World

Mark A. Miller

God's got the whole world,
God's got the whole world,
God's got the whole world in God's hands,
the whole world in God's hands.

God's got you and me,
God's got you and me,
God's got you and me in those hands.

God's got the whole world,
the whole world,
God's got the whole world
in God's hands.

—Black Spiritual, adapt. Mark A. Miller

*Gospel Lesson | NT page 74 in pew Bibles.

Luke 16:1–13

Lector: The word of the Lord.

People: **Thanks be to God.**

Sermon

Loving Lament

Response

*Response Hymn | UMH 375. The congregation sings the refrain. The stanzas are sung by soloists.

There Is a Balm in Gilead

BALM IN GILEAD

Call to Prayer

Minister: The Lord be with you.

People: And also with you.

Minister: Let us pray.

Prayers of the People | The congregation responds to each petition:

People: Hear our prayer.

Mission of the Month

Offertory Anthem

What Shall I Render to the Lord

Peter Tiefenbach

What shall I render to the LORD for all his benefits to me?

I will offer the sacrifice of thanksgiving
and will call on the name of the LORD.

I will take the cup of salvation and will call on the name of the LORD.

I will pay my vows to the LORD now, in the presence of all his people,
in the courts of the LORD's house, in the midst of you, O Jerusalem.

—*Psalm 116:12–14, 17–19*

*Doxology

LASST UNS ERFREUEN

Praise God from whom all blessings flow;

Praise God, all creatures here below; Alleluia, Alleluia!

Praise God above, ye heavenly host,

Praise Father, Son and Holy Ghost. Alleluia, Alleluia,

Alleluia, Alleluia, Alleluia.

Thanksgiving and Holy Communion

***The Great Thanksgiving** | Musical setting A, found on page 17 in the hymnal.

***The Lord's Prayer** | All are encouraged to pray the Lord's Prayer in the language of their choosing. The English text can be found at 895 in the pew hymnal.

Sharing of the Bread and Wine | All who love Christ, earnestly repent of their sins, and seek to be at peace with God and neighbor are invited to receive Communion. Bread and wine are used for Communion. After a server places bread in your hands, you may receive wine by dipping your bread into the chalice. If you desire gluten-free bread or grape juice, these are available from servers at the front near Memorial Chapel and near the back opposite the attendant's desk. If you will not receive Communion, you are welcome to come forward to receive a blessing, indicated by crossing your arms over your chest.

Communion Anthem

From the Rising of the Sun

M. Susan Brown

From the rising of the sun to its going down again,
let the name of the LORD be praised.

—*Psalm 113:3*

Communion Hymn | UMH 480. To be sung as needed.

O Love That Wilt Not Let Me Go

ST. MARGARET

Sending Forth

***Benediction**

***Sending Hymn** | UMH 181

Ye Servants of God

HANOVER

Postlude

Sortie Alleluia (Cinq Pièces pour l'Office Divin)

Jean-Jacques Grunenwald
(1911–1982)

Carillon

TODAY IN WORSHIP

Presiding Ministers

Lyn Pace *Assistant Dean of Religious Life, Duke University Chapel*
Meg Greto *Divinity '26*

Preacher

Luke A. Powery *Dean, Duke University Chapel*

Lectors

Andres Valdiri *Chapel Scholar; UNC-Chapel Hill '27*
Calvin Rausch *Chapel Scholar; Sanford '26*

Mission of the Month

Julia Jose *Duke Habitat for Humanity, Co-President; Trinity '26*
Noah Awan *Duke Habitat for Humanity, Vice President; Trinity '28*

Musicians

Duke Chapel Choir *Choir*
Zebulon Highben *Director of Chapel Music, Duke University Chapel*
Chad Fothergill *Chapel Organist, Duke University Chapel*
David Lim *Organ Scholar, Duke University Chapel*
Aaron Colston *Chapel Carillonneur, Duke University Chapel*
Chris DeStasio *Soloist*
Jaclyn Brown *Soloist*
Alain Arvelo *Soloist*

Head Ushers

Ken Arneson *Member, Congregation at Duke Chapel*
Pete Acker *Member, Congregation at Duke Chapel*

Mission of the Month | All of today's cash offerings and checks written to Duke University Chapel will be used to support the Duke Student Chapter of Habitat for Humanity and its work in Durham. Duke Habitat is an active student organization on campus that raises awareness and funds for Durham Habitat for Humanity. Families selected by Habitat work closely with volunteers, investing 240–300 hours of their own labor, or “sweat equity,” into building their homes. Because partner families and Duke students do much of the work on Habitat homes, a Duke Chapter house fosters close connections between the students of Duke University and the people of Durham. Send checks to: Duke University Chapel, Box 90974, Durham, NC 27708-0974. You are invited to give online at chapel.duke.edu/offering. You may also give directly to the Congregation at Duke University Chapel by check written

to the Congregation at Duke University Chapel or online at congregation.chapel.duke.edu and access the giving link.

Today's Flowers | The flowers for the worship service today are given to the glory of God by the Nancy Hanks Chapel Endowment.

Liturgical Acknowledgments | **Prayer for Illumination.** Adapted from *A New Zealand Prayer Book, He Karakia Mihinare o Aotearoa*, The Anglican Church in Aotearoa, New Zealand, and Polynesia, 1988.

Tear away here



ACCESSIBILITY

Hearing assistance technology, as well as large-print worship guides and hymnals, is available at the AV console in the rear of the Chapel. For other accommodations, please approach a minister or usher.

RESTROOMS

For public restrooms, exit the Chapel through the main front doors and turn left to enter the Divinity School. Restrooms are along the Divinity School hallway.

TOURS

Meet a docent outside in front of the Chapel immediately following the service for a free, forty-five minute tour of Duke Chapel's history, architecture, and life.

LEARN MORE AND ENGAGE

Scan the QR codes to learn more about the missions and ministries of Duke Chapel and the Congregation at Duke University Chapel. Also, read this week's announcements, see upcoming events, and find out how to engage with the Chapel and the Congregation.



*The Congregation
at Duke Chapel*

chapel.duke.edu
919-681-9488
dukechapel@duke.edu

congregation.chapel.duke.edu
919-684-3917
congregation@duke.edu

401 Chapel Drive, Campus Box 90974, Durham, NC 27708