



Duke
UNIVERSITY
CHAPEL

BRIDGING FAITH & LEARNING

SERVICE OF WORSHIP
Eleventh Sunday after Pentecost
Sunday, August 13, 11:00 a.m.



Disciples See Christ Walking on the Water, Henry Ossawa Tanner, 1859–1937.

The lessons today explore the theme of God’s blessings for those who faithfully trust in God. The Gospel lesson gives us an example of great faith when Peter sees Jesus walking on water and calls out to him: “If it is you, command me to come to you on the water.” He joins Jesus, walking on water, and it is not until Peter allows the distractions of the storm around him to shake his faith that he begins to sink. Jesus reaches out to save him in spite of Peter’s doubt.

Gathering

Organ Voluntary

Selections from *Livre d'orgue* (1708)

Pierre du Mage
(1674–1751)

Greeting and Call to Worship

*Processional Hymn | UMH 680

Father, We Praise Thee

CHRISTE SANCTORUM

*Prayer of Confession and Words of Assurance | The minister offers words of confession in three biddings to which the congregation responds as follows:

Minister: Lord, have mercy.

People: Lord, have mercy.

Minister: Christ, have mercy.

People: Christ, have mercy.

Minister: Lord, have mercy.

People: Lord, have mercy.

The minister speaks words of assurance.

*Peace | All exchange signs and words of God's peace.

Minister: The peace of Christ be with you.

People: And also with you.

Proclamation

Prayer for Illumination | In unison:

Holy God, touch our hearts through your Word, help us to grow toward the life you have promised, and touch our lives, making them signs of your love for all, through Christ our Lord. Amen.

Old Testament Lesson | OT page 311 in pew Bibles.

1 Kings 19:9–18

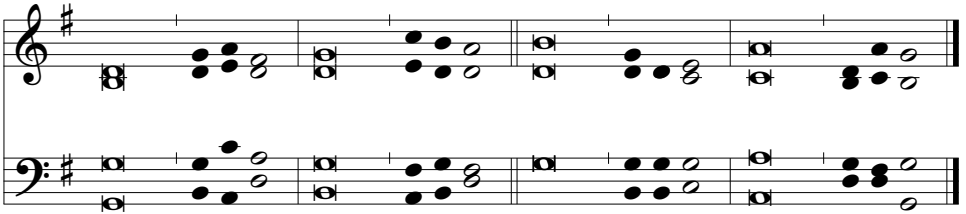
*All rise as able

Lector: The word of the Lord.

People: **Thanks be to God.**

Psalmody | Stanza 1 will be sung by the cantor. The congregation joins on stanzas 2 and 3.

Psalm 85:8–13



I must hear what He would speak, God, | ADONAI,
for He speaks shalom to his people and to those true to him—
but let them not re- | turn to folly!
Surely His salvation is near to | those who fear Him,
that Glory may dwell | in our land.

Covenant-love | and Truth meet;
Righteousness and | Shalom kiss.
Truth sprouts | from the earth,
and Righteousness peers | from the sky.

Surely ADONAI will give | what is good,
and our land will | give its yield.
Righteousness advan- | ces before Him,
that He may set foot | on the way!

—translation by Ellen F. Davis

New Testament Lesson | NT pages 149–150 in pew Bibles.

Romans 10:5–15

Lector: The word of the Lord.

People: **Thanks be to God.**

*Gospel Lesson | NT page 15 in pew Bibles.

Matthew 14:22–33

Lector: The word of the Lord.

People: Thanks be to God.

Sermon

Silence Is Golden?

Response

*Response Hymn | UMH 474

Precious Lord, Take My Hand

PRECIOUS LORD

Call to Prayer

Minister: The Lord be with you.

People: And also with you.

Minister: Let us pray.

*Apostles' Creed

I believe in God the Father Almighty, maker of heaven and earth:

And in Jesus Christ his only Son our Lord, who was conceived by the Holy Spirit, born of the Virgin Mary, suffered under Pontius Pilate, was crucified, dead, and buried; he descended into hell; the third day he rose from the dead; he ascended into heaven, and sitteth at the right hand of God the Father Almighty; from thence he shall come to judge the quick and the dead.

I believe in the Holy Spirit, the holy catholic church, the communion of saints, the forgiveness of sins, the resurrection of the body, and the life everlasting. Amen.

Call to Prayer

Minister: The Lord be with you.

People: And also with you.

Minister: Let us pray.

Prayers of the People | The congregation responds to each petition:

People: Hear our prayer.

Offertory Solo

The Lord's Prayer

Gwyneth Walker

Our Father who art in heaven,
hallowed be thy name.
Thy kingdom come,
thy will be done in earth as it is in heaven.
Give us this day our daily bread,
and forgive us our trespasses
as we forgive those who trespass against us.

Lord, make me an instrument of your peace.
Where there is hatred, let me sow love;
where there is injury, pardon;
where there is anger, peace;
where there is doubt, faith;
where there is emptiness, hope;
where there is darkness, light;
Where there is sadness, joy.

And lead us not into temptation,
deliver us from evil;
for thine is the kingdom,
and the power, and the glory, forever and ever,
and ever and ever. Amen.

—*The Lord's Prayer; St. Francis of Assisi (c. 1181–1226)*

*Doxology

LASST UNS ERFREUEN

**Praise God from whom all blessings flow;
Praise God, all creatures here below; Alleluia, Alleluia!
Praise God above, ye heavenly host,
Praise Father, Son and Holy Ghost. Alleluia, Alleluia,
Alleluia, Alleluia, Alleluia!**

Thanksgiving

*Prayer of Thanksgiving

*The Lord's Prayer | All are encouraged to pray the Lord's Prayer in the language of their choosing.

**Our Father, who art in heaven, hallowed be thy name.
Thy kingdom come, thy will be done on earth as it is in heaven.
Give us this day our daily bread.
And forgive us our trespasses,
as we forgive those who trespass against us.
And lead us not into temptation, but deliver us from evil.
For thine is the kingdom, and the power, and the glory, forever.
Amen.**

Sending Forth

*Benediction

*Closing Hymn | UMH 117

O God, Our Help in Ages Past

ST. ANNE

Closing Voluntary

Improvisation

Memorial Chapel Communion | Immediately following today's worship service, a brief communion service will be held in Memorial Chapel. Following communion, the minister will be available to offer prayers and anointing.

TODAY IN WORSHIP

Presiding Ministers

Kathryn Lester-Bacon *Director of Religious Life, Duke University Chapel*

Bruce Puckett *Assistant Dean, Duke University Chapel*

Preacher

Carol Gregg *Pastor, Congregation at Duke Chapel*

Lectors

Sharon Jones *Member, Congregation at Duke Chapel*
Ken Davenport *Member, Congregation at Duke Chapel*

Musicians

Chad Fothergill. *Chapel Organist, Duke University Chapel*
Monica Szabo-Nyeste. *Soloist*

Head Usher

James Ferguson *Member, Congregation at Duke Chapel*

Today's Offering | All of today's cash offerings and checks written to Duke University Chapel will be used for an emergency fund for disaster and recovery support for communities affected by natural disasters and humanitarian crises. Send checks to: Duke University Chapel, Box 90974, Durham, NC 27708-0974. Give online at chapel.duke.edu/offering.

Liturgical Acknowledgments | Prayer for Illumination adapted from the *Roman Missal*, © 1973, International Committee on English in the Liturgy. Psalm 85 translation © Ellen F. Davis. Used by permission.

Today's Flowers | The flowers for the worship service today are given to the glory of God in honor of the 45th wedding anniversary of Kevin and Jan Middleton by their loving children.

ENGAGE

University Prayer of Thanksgiving | Each week, we focus on a different campus unit, school, or department for whom to give thanks to God for their service and contributions to the wider university community and beyond. Today, we give thanks for the Department of Romance Studies.

Restrooms in Divinity School | Public restrooms are available in the Divinity School. To access them, exit the Chapel through the main front doors and enter the Divinity School. Restrooms are along the hallway in the Divinity School.

Listen-Assist Smartphone App | A new smartphone app lets you use your own phone and earbuds to listen in the pews to services. Stop by the AV console in the sanctuary on the way into a service for an easy two-step process to connect to the sound system.

ENGAGE

Tour After the Service | Learn about the history, architecture, and life of Duke Chapel on a tour immediately following the service. The tour is free and lasts about forty-five minutes. Meet the docent outside in front of the Chapel.

Chapel Flowers | If you would like to honor a loved one and the worshipping community of the Duke Chapel with a gift of flowers to decorate the chancel for Sunday worship, please contact Angela Flynn, coordinator of worship and ministry, at angela.flynn@duke.edu.

Fellowship Event Today | All are welcome to stay after worship today for a time of fellowship and refreshment in the Chapel lounge, located in the lower level of the building. Cake and a get-to-know-you bingo game will be offered.

Canned Food Drive | The Food Bank of Central & Eastern North Carolina welcomes donations of any type of canned goods and other non-perishable food items, including both baby formula and baby food. Please drop off donations for the Food Bank on the back pew of the Chapel today or next Sunday, August 20.

Young Adult Dinner and Discussion | Please join friendly people for a simple dinner and Bible study that will focus on the experience of graduate students, younger adults, and their partners. The next gathering will be Monday, August 21, at 6:30 p.m. in the Chapel kitchen, located in the lower level of the Chapel. The group will explore the Gospel of John. All are welcome, and we encourage questions and a range of perspectives. Please contact evan.bille@duke.edu for additional information.

Lasagnas and Volunteers Needed | The Congregation serves dinner at Urban Ministries of Durham once a month. Donated lasagnas to serve twenty-four (such as two, party-sized Stouffer's lasagnas) are needed on Wednesday, August 23, and Sunday, September 10, both at 5:00 p.m. Volunteers are needed to stay to serve the meal. To donate or volunteer, please contact congregation@duke.edu.

ENGAGE

William Byrd Evensong Service | A special Choral Evensong service next Sunday, August 20, at 4:00 p.m. will draw upon the music of the English composer William Byrd, marking the recent 400th anniversary of Byrd's death. The service will feature works in Latin including the hymn "Christe qui lux es et dies" and the anthem "In manus tuas."

Annual Crop Drop | Join campus Religious Life groups, as well as Duke and Durham community members, on Saturday, August 26, from 8:00 a.m. to 1:00 p.m. on East Campus for the annual Crop Drop. Start the fall semester by helping to feed the community as we sort and bag 30,000 pounds of potatoes, which will then be delivered to local organizations that serve people in need. Learn more and sign up at chapel.duke.edu/cropdrop.

Choir Auditions | Duke Chapel's choral ensembles—the Chapel Choir, Evensong Singers, and Vespers Ensemble—resume rehearsals and worship leadership in late August. Auditions are open to students, faculty, staff, and members of the broader Duke and Durham communities. For more information or to schedule an audition, please contact the Chapel Music office at chapelmusic@duke.edu or 919-684-3898.

Sunday Morning Classes | Sunday morning Christian Education classes are offered from 9:45–10:45 a.m., with coffee and refreshments provided at 9:30 a.m. Classes meet in the lowest level of the Westbrook building. New participants are welcome at any time. Please contact congregation@duke.edu for additional information.

Wee Praise: Music and movement for children ages 0–3 with parents or caregivers in 0011 Westbrook

Godly Play: Spiritual formation for children ages 4 through 5th grade in 0050 Langford

Youth Program: Youth in 6th–12th grades will explore the Gospel of John in 0015 Westbrook

Westbrook Adult Bible Study: On August 20, The Rev. Dr. Christian Wilson, Retired Methodist minister and Congregation member, will lead a class on 1 Corinthians 15–16 in 0013 Westbrook and over Zoom.

ACCESSIBILITY

Large-print worship guides are available at the visitor relations desk. Hearing assistance units are available at the AV console in the rear of the Chapel. Please let us know if you need other accommodations by approaching a minister or usher, or email us at dukechapel@duke.edu.

LET'S KEEP IN TOUCH

We would like to get to know you. What are your questions? What is your story? Take a moment to fill out a very brief form and a Chapel minister or other staff member will contact you soon. Scan the QR code or visit chapel.duke.edu/connect.



*The Congregation
at Duke Chapel*

chapel.duke.edu
919-681-9488

congregation.chapel.duke.edu
919-684-3917

401 Chapel Drive
Campus Box 90974
Durham, NC 27708

The Congregation at Duke University Chapel joyfully welcomes all persons regardless of age, race, class, origin, sexual orientation, gender identity, or any other distinction and invites membership and participation in all of its ministries.

dukechapel@duke.edu

Connect with us



@DukeChapel
#FindSanctuary

Please email congregation@duke.edu to receive the weekly eNews.