



Duke UNIVERSITY CHAPEL

BRIDGING FAITH & LEARNING

SERVICE OF WORSHIP

Palm Sunday

Sunday, March 24, 2024, 11:00 a.m.



John August Swanson, *Entry into the City*, 1990.

As we enter Holy Week, we are presented with scripture lessons weaving together ancient prophecy, a reflection on Jesus's humility, and a triumphal entry fit for a king. The highlight is the story of all of Jerusalem coming out to welcome one of their own; they acclaim him "King of the Jews." Yet in the background, forces are already at work to bring about a painful end to the week, foreshadowed by the prophecies in the lesson from Isaiah. The Epistle reassures us that despite the praise and adulation of the crowd, Jesus remains humble and obedient to God's will—even to the point of death. In this famous "Christ Hymn," Jesus's deity and humble acceptness of human form are simultaneously proclaimed, and we are assured his humble obedience will reach fruition when every tongue will one day confess that Jesus Christ is Lord, to the glory of God.

Gathering

*All rise as able

Carillon

Prelude

O Gott, du frommer Gott (*O God, Thou Faithful God*)

Johannes Brahms
(1833–1897)

Greeting and Call to Worship

Introit

Hosanna (*Mass of the Holy Spirit*)

Randall Thompson
(1899–1984)

Hosanna in the highest.

Liturgy of the Palms

*Blessing of the Palms | Please stand as you are able.

Leader: Saving God, your Son Jesus entered Jerusalem hailed as Messiah, willing to suffer and to die;

People: Let these palms be for us signs of his victory.

Leader: Grant that we who bear these palms in his name may ever hail him as our King;

People: And give us grace to follow him in the way that leads to eternal life. Amen.

*Processional Hymn | UMH 280

All Glory, Laud, and Honor

ST. THEODULPH

*Prayer of Confession and Words of Assurance | In unison:

Eternal God: In Jesus Christ you entered Jerusalem willing to die for our sins. We confess that we have not hailed you as King or gone before you in the world with praise. For brief faith that fades in trouble, for enthusiasms that fizzle out, for hopes we parade but do not pursue, have mercy on us. Forgive us, God, and give us such trust in your power that, in every city, we may live for your justice and tell of your loving-kindness; for the sake of our Savior, the Lord Jesus Christ. Amen.

The minister speaks words of assurance.

***Peace** | All exchange signs and words of God's peace.

Minister: The peace of Christ be with you.

People: **And also with you.**

Proclamation

Prayer for Illumination | In unison:

Eternal God, whose word silences the shouts of the mighty: Quiet within us every voice but your own. Speak to us through the suffering and death of Jesus Christ that, by the power of your Holy Spirit, we may receive grace to show Christ's love in lives given to your service. Amen.

Old Testament Lesson | OT page 640 in pew Bibles.

Isaiah 50:4–9a

Lector: The word of the Lord.

People: **Thanks be to God.**

Anthem

Lamb of God (*Mary Lou's Mass*)

Mary Lou Williams
(1910–1981)

Lamb of God, you take away the sins of the world,
have mercy on us.

Lamb of God, you take away the sins of the world,
have mercy on us.

Lamb of God, you take away the sins of the world,
Grant us peace.

—*Ordinary of the Mass*

New Testament Lesson | NT pages 186 in pew Bibles.

Philippians 2:5–11

Lector: The word of the Lord.

People: Thanks be to God.

*Gradual Hymn | UMH 278. Stanza 1. All turn to face the Gospel procession.

Hosanna, Loud Hosanna

ELLACOMBE

*Gospel Lesson | NT pages 21–22 in pew Bibles.

Mark 11:1–11

Lector: The word of the Lord.

People: Thanks be to God.

*Gradual Hymn | UMH 278. Stanzas 2–3. All turn to face the Gospel procession.

Hosanna, Loud Hosanna

ELLACOMBE

Sermon

Desiring Descent

Response

*Apostles' Creed

I believe in God the Father Almighty, maker of heaven and earth:

And in Jesus Christ his only Son our Lord, who was conceived by the Holy Spirit, born of the Virgin Mary, suffered under Pontius Pilate, was crucified, dead, and buried: he descended into hell; the third day he rose from the dead; he ascended into heaven, and sitteth at the right hand of God the Father Almighty; from thence he shall come to judge the quick and the dead.

I believe in the Holy Spirit, the holy catholic church, the communion of saints, the forgiveness of sins, the resurrection of the body, and the life everlasting. Amen.

Call to Prayer

Minister: The Lord be with you.

People: And also with you.

Minister: Let us pray.

Prayers of the People | The congregation responds to each petition:

People: Hear our prayer.

Offertory Anthem

When We Are Tempted to Deny Your Son

Zebulon M. Highben

When we are tempted to deny your Son,
because we fear the anger of the world,
and we are few who bear the insults hurled,
your will, O God, be done.

When we are tempted to betray your Son,
because he leads us in a harder way,
and makes demands we do not want to pay,
your will, O God, be done.

*Lord Jesus, think on me, and purge away my sin.
Ah, Lord Jesus, think on me.*

When we forget the cross that held your Son,
and would avoid the burden of this life,
the cry for justice and an end to strife,
your will, O God, be done.

When doubt obscures the vict'ry of your Son,
and faith is weak and all resolve has fled,
help us to know him risen from the dead:
Your will, O God, be done.

—David W. Romig (1926–2002)

**Praise God from whom all blessings flow;
Praise God, all creatures here below;
Praise God above, ye heavenly host,
Praise Father, Son and Holy Ghost.**

Thanksgiving

*Prayer of Thanksgiving

*The Lord's Prayer | All are encouraged to pray the Lord's Prayer in the language of their choosing.

**Our Father, who art in heaven, hallowed be thy name.
Thy kingdom come, thy will be done on earth as it is in heaven.
Give us this day our daily bread.
And forgive us our trespasses,
as we forgive those who trespass against us.
And lead us not into temptation, but deliver us from evil.
For thine is the kingdom, and the power, and the glory, forever.
Amen.**

Sending Forth

*Benediction

*Sending Hymn | See printed hymn at the end of worship guide.

Ride On, Ride On, in Majesty!

THE KING'S MAJESTY

Postlude

Allemanda, Partita no. 2 in D minor (BWV 1004)

Johann Sebastian Bach
(1685-1750)

Carillon

TODAY IN WORSHIP

Presiding Ministers

Bruce Puckett *Assistant Dean, Duke University Chapel*
Racquel Gill *Minister for Intercultural Engagement, Duke University Chapel*

Preacher

Luke A. Powery *Dean, Duke University Chapel*

Lectors

Darin Diep *Pathways Fellow, Divinity '26*
Hananiel Setiawan *Chapel Advisory Board; Graduate '23*

Musicians

Duke Chapel Choir *Choir*
Zebulon Highben *Director of Chapel Music, Duke University Chapel*
Robert Parkins *University Organist, Duke University*
Chad Fothergill *Chapel Organist, Duke University Chapel*
Jeffrey Thurston *Violin*
Katherine Johnson *Organ Scholar, Duke University Chapel*
Mitchell Eithun *Chapel Carillonneur, Duke University Chapel*

Head Usher

James Ferguson *Member, Congregation at Duke Chapel*

Today's Arrangements of Palms | The beautification of the Chapel for all of Lent is provided by the generosity of the Elizabeth Lucina Gotham Memorial Chapel Endowment.

Liturgical Acknowledgements | Prayer for Illumination. Adapted from *Book of Worship*, United Church of Christ, © 1986 by United Church of Christ Office for Church Life and Leadership and reprinted © 2002 by United Church of Christ, Local Church Ministries, Worship and Education Ministry Team, Cleveland, Ohio. All rights reserved.

Today's Offering | All of today's cash offerings and checks written to Duke University Chapel will support human service organizations in the greater Durham area. Give online at chapel.duke.edu/offering. Send checks to: Duke University Chapel, Box 90974, Durham, NC 27708-0974.

ENGAGE

University Prayer of Thanksgiving | Each week, we focus on a different campus unit, school, or department for whom to give thanks to God for their service and contributions to the wider university community and beyond. Today, we give thanks for the Department of Art, Art History, and Visual Studies.

Tour After the Service | Learn about the history, architecture, and life of Duke Chapel on a tour immediately following the service. The tour is free and lasts about forty-five minutes. Meet the docent outside in front of the Chapel.

Restrooms in Divinity School | Public restrooms are available in the Divinity School. To access them, exit the Chapel through the main front doors, turn to the left, and enter the Divinity School. Restrooms are along the hallway in the Divinity School.

Chapel Flowers | If you would like to honor a loved one and the worshipping community of the Duke Chapel with a gift of flowers to decorate the chancel for Sunday worship, please contact Angela Flynn, coordinator of worship and ministry, at angela.flynn@duke.edu.

Science Drive Road Work in April | Beginning April 1, maintenance work will result in the closure of one lane of Science Drive near the Biological Sciences Building during the day and a total closure of the road from 8:15 p.m. to 6:00 a.m. Monday through Friday.

PathWays Fellowship | The PathWays Fellowship is a year-long (August 15 to May 15) residential program for students in any of Duke Divinity School's graduate programs that offers opportunities for vocational exploration, mentorship, service, and formation deeply rooted in the Durham community and the fellows' Christian traditions. Learn more and apply by April 15 at chapel.duke.edu/pathways.

Durham CROP Hunger Walk This Afternoon | The Durham community will gather in front of Duke Chapel this afternoon starting at 1:30 p.m. and set out at 2:30 p.m. on the 50th annual Durham CROP Hunger Walk. The Congregation at Duke Chapel will be taking part in the walk and raising money for hunger-fighting initiatives in our community and across the world. All are welcome!

ENGAGE

Holy Week and Easter | Join us as we move through the passion, death, and resurrection of Christ with worship services and concerts during Holy Week and Easter. These services will benefit from the voices of many guest preachers, who are all Duke alumni, students, staff, or faculty, as part of the Chapel's celebration of Duke's Centennial. See the full schedule at chapel.duke.edu/holyweek.

- **Palm Sunday Choral Evensong**—Sunday, March 24, at 4:00 p.m.
- **Holy Week Midday Services**—March 25–28 at 12-noon
- **Maundy Thursday Service**—Thursday, March 28, at 7:00 p.m.
- **Procession of the Stations of the Cross**—Friday, March 29, at 11:30 a.m. on the Duke Chapel Quad
- **Good Friday Noon Service**—Friday, March 29, at 12-noon
- **Good Friday Tenebrae**— Friday, March 29, at 7:30 p.m.
- **Holy Saturday Organ Recital**—Saturday, March 30, at 12-noon in Goodson Chapel at Duke Divinity School
- **Easter Sunrise Service**—Sunday, March 31, at 6:30 a.m. in Duke Gardens
- **Easter Service with Holy Communion**—Sunday, March 31, at 9:00 a.m.
- **Easter Day Service**—Sunday, March 31, at 11:00 a.m.
- **Easter Day Choral Evensong**— Sunday, March 31, at 4:00 p.m.

Choral Evensong | The Choral Evensong service today at 4:00 p.m. will feature music for Palm Sunday, including service music by the English composer John Sanders and the anthem *Herr Jesu Christ, mein Lebens Licht* by J. S. Bach. The Chapel's Choral Evensong follows the liturgy of the *Book of Common Prayer* with choral and organ music from the English cathedral tradition, led by the Chapel's Evensong Singers.

ChorWorks Summer Program in Early Sacred Music | Through Duke Chapel, the nonprofit organization ChorWorks is offering their summer program "Henry Purcell—England's Orpheus" from June 10 to 16, at Duke University. The workshop is led by Dr. Philip Cave, executive director of ChorWorks and conductor-in-residence at Duke Chapel. Those invited to the program will receive a scholarship covering the full cost of tuition and housing. Learn more and apply at chapel.duke.edu/chorworks.

ENGAGE

Holy Saturday Organ Recital | Duke Chapel Organ Scholar Katherine Johnson will offer a recital with music for Holy Saturday on March 30 at 12-noon in the Divinity School's Goodson Chapel. The concert brings together varied settings of psalms, chorales, and chant for the Lenten season. The program will include works by Johann Sebastian Bach, Johannes Brahms, Ethel Smyth, and Herbert Howells.

Bach's 'St. John Passion' | First performed 300 years ago on Good Friday, April 7, 1724, the *St. John Passion* is renowned for its dramatic choruses, expressive arias, and compelling narrative. It sets text from the Gospel of John, chapters 18 and 19, composed in two parts: Part I ends with Peter's denial of Jesus, and Part II concludes with Christ's burial. The performance will be Sunday, April 7, at 4:00 p.m. Purchase tickets at tickets.duke.edu.

Centennial Concert Celebrates Mary Lou Williams' Music and Legacy | As part of Duke University's Centennial Celebration, the Mary Lou Williams Center for Black Culture, Duke Arts, and Duke Chapel will present "Our First Lady of Jazz" on Sunday, April 14, at 4:00 p.m. in the Chapel. This dynamic concert celebrating the pioneering composer Mary Lou Williams will feature a wide range of Black sacred music, from vocal jazz and gospel to spirituals, classical, and the blues. For the performance, the Duke Chapel Choir and the North Carolina Central University Vocal Jazz Ensemble will join forces with guest artists. Free admission. Learn more at chapel.duke.edu/marylouconcert.

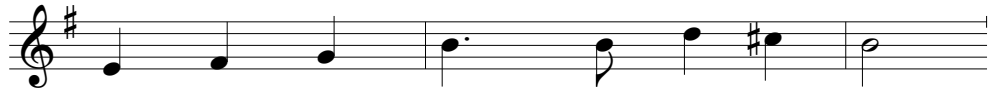
Nursery Availability for Easter Services | The Duke Chapel Nursery will be open for the 9:00 a.m. and the 11:00 a.m. worship services on Easter Sunday, March 31. The nursery will open 15 minutes before the start of each service. Please note: In the past, inclement weather has sometimes necessitated the Sunrise Service to be held in the Chapel. If this should happen, be aware that no nursery will be available. For any questions regarding the nursery, please contact Phyllis Snyder, Children's Pastor and Director of the Nursery, at phyllis.snyder@duke.edu.

Sunday Morning Classes | Sunday morning Christian Education classes are available for all ages on most Sundays of the year. There will be no classes on Easter morning, March 31. All classes will resume on April 6.

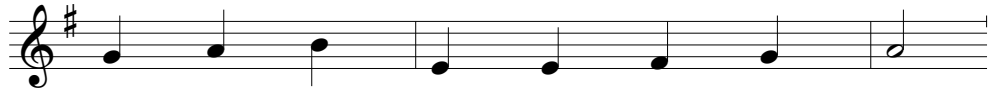
SENDING HYMN | Ride On, Ride On in Majesty!



1. Ride on, ride on in maj - es - ty!
2. Ride on, ride on in maj - es - ty!
3. Ride on, ride on in maj - es - ty!
4. Ride on, ride on in maj - es - ty!



Hear all the tribes ho - san - na cry;
In low - ly pomp ride on to die.
The hosts of an - gels in the sky
In low - ly pomp ride on to die,



O Sav - ior meek, your road pur - sue,
O Christ, your tri - umphs now be - gin
look down with sad and won - d'ring eyes
bow your meek head to mor - tal pain,



with palms and scat - tered gar - ments strewed.
o'er cap - tive death and con - quered sin.
to see the ap - proach - ing sac - ri - fice.
then take, O Christ, your pow'r and reign!

Text: Henry H. Milman, 1791–1868, alt.

Music: Graham George, 1912–1993

THE KING'S MAJESTY

LM

Music © 1941 The H. W. Gray Co., Inc.

Printed with permission under OneLicense.net # A-725399

ACCESSIBILITY

Hearing assistance units, as well as large-print worship guides and hymnals, are available at the AV console in the rear of the Chapel. There, you can also find directions to download a listen-assist app on your phone. Please let us know if you need other accommodations by approaching a minister or usher, or email us at dukechapel@duke.edu.

LET'S KEEP IN TOUCH

We would like to get to know you. What are your questions? What is your story? Take a moment to fill out a very brief form and a Chapel minister or other staff member will contact you soon. Scan the QR code or visit chapel.duke.edu/connect.



Duke
UNIVERSITY
CHAPEL



*The Congregation
at Duke Chapel*

chapel.duke.edu
919-681-9488

401 Chapel Drive
Campus Box 90974
Durham, NC 27708

dukechapel@duke.edu

Connect with us



@DukeChapel
#FindSanctuary

congregation.chapel.duke.edu
919-684-3917

The Congregation at Duke University Chapel joyfully welcomes all persons regardless of age, race, class, origin, sexual orientation, gender identity, or any other distinction and invites membership and participation in all of its ministries.

Please email congregation@duke.edu to receive the weekly eNews.