



Duke
UNIVERSITY
CHAPEL

BRIDGING FAITH & LEARNING

SERVICE OF WORSHIP

Epiphany Sunday

Sunday, January 4, 2026, 11:00 a.m.



Mary Jane Miller, *The Nativity*, 2008.

Today we observe Epiphany, which falls on January 6 and is the climax of the twelve days of the Christmas season. The term *epiphany* comes from a Greek word that means “to manifest” or “to show.” The Epiphany season is associated with the first manifestations of Jesus—to the wise men, in his presentation in the temple, in his baptism, to his disciples, in his first miracle. Today’s lesson from Isaiah speaks of the light that will arise upon all people. In Matthew, the wise men also follow a light—a star that guides them to the Christ child, revealing to the world that this small infant is Lord and King, worthy of praise and worship.

Gathering

Prelude

Umoja for Flute Ensemble

Valerie Coleman

Koliady (Three Ukrainian Christmas Carols)

Peter Senchuk

Greeting and Call to Worship

***Epiphany Blessing and Chalking of the Door** | Ritual can be found at the end of the worship guide. All face the Chapel's main entrance.

***Gathering Hymn** | UMH 254

We Three Kings

KINGS OF ORIENT

***Prayer of Confession and Words of Assurance** | In unison:

Generous God, you give us the greatest gift of all: yourself. But often we find it hard to take notice; we are caught up with our own gifts, given and received. Forgive us, generous God, for the casual way we treat your gift of love. Cast out our sin and enter in; be born in us today.

The minister speaks words of assurance.

***Peace** | All exchange signs and words of God's peace.

Minister: The peace of Christ be with you.

People: **And also with you.**

Proclamation

Prayer for Illumination | In unison:

God of Epiphany, we long to hear your holy word in fresh ways. Open our ears to the call of your voice. Open our eyes to the dawning of a new day. Fill us with anticipation for your future. Amen.

***All rise as able**

Old Testament Lesson | OT page 649 in pew Bibles.

Isaiah 60:1–6

Lector: The word of the Lord.

People: Thanks be to God.

Voluntary

We Three Kings/Carol of the Bells

Phyllis Avidan Louke

New Testament Lesson | NT pages 181 in pew Bibles.

Ephesians 2:1–12

Lector: The word of the Lord.

People: Thanks be to God.

*Gradual Hymn | UMH 237. Stanzas 1–3. All turn to face the Gospel procession.

Sing We Now of Christmas

FRENCH CAROL

*Gospel Lesson | NT pages 1–2 in pew Bibles.

Matthew 2:1–12

Lector: The word of the Lord.

People: Thanks be to God.

*Gradual Hymn | UMH 237. Stanzas 4–5.

Sing We Now of Christmas

FRENCH CAROL

Sermon

Overwhelming Joy

Response

*Apostles' Creed

I believe in God the Father Almighty, maker of heaven and earth:

And in Jesus Christ his only Son our Lord, who was conceived by the Holy Spirit, born of the Virgin Mary, suffered under Pontius Pilate, was crucified, dead, and buried: he descended into hell; the third day he rose from the dead; he ascended into heaven, and sitteth at the right hand of God the Father Almighty; from thence he shall come to judge the quick and the dead.

I believe in the Holy Spirit, the holy catholic church, the communion of saints, the forgiveness of sins, the resurrection of the body, and the life everlasting. Amen.

Call to Prayer

Minister: The Lord be with you.

People: **And also with you.**

Minister: Let us pray.

Prayers of the People | The congregation responds to each petition:

People: **Hear our prayer.**

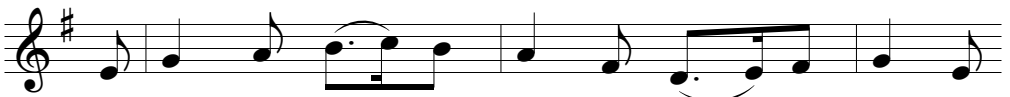
Offertory Music

Scandinavian Suite, Book 1

Amy Rice-Young

*Doxology

GREENSLEEVES



So bring him in - cense, gold, and myrrh; come peas - ant,



king, to own him. The King of kings sal - va - tion brings; let

lov - ing hearts en - throne him. This, this is Christ the
king, whom shep - herds guard and an - gels sing; haste, haste to
bring him laud, the babe, the son of Mar - y!

Thanksgiving

*Prayer of Thanksgiving

*The Lord's Prayer | All are encouraged to pray the Lord's Prayer in the language of their choosing. The English text can be found at 895 in the pew hymnal.

Sending Forth

*Benediction

*Sending Hymn | UMH 220

Angels from the Realms of Glory

REGENT SQUARE

Postlude

Wie schön leuchtet der Morgenstern, BuxWV 223

Dieterich Buxtehude
(c. 1637–1707)

Memorial Chapel Communion | Immediately following the postlude, a brief communion service will be held in Memorial Chapel; worship guides for the service are available near the entrance. Following communion, the minister will be available to offer prayers and anointing.

TODAY IN WORSHIP

Presiding Ministers

Ryan Wilson *Senior Pastor, Congregation at Duke Chapel*
Zebulon Highben *Director of Chapel Music, Duke University Chapel*

Preacher

Bruce Puckett *Assistant Dean, Duke University Chapel*

Lectors

Davyda Hammond *Divinity '28*
Keagan Bouman *Intern for Worship and Student Engagement; Divinity '26*

Musicians

Raleigh Flute Choir *Flute Ensemble*
Chad Fothergill *Chapel Organist, Duke University Chapel*
David Lim *Chapel Organ Scholar, Duke University Chapel*

Head Usher

Ken Arneson *Member, Congregation at Duke Chapel*
Pete Acker *Member, Congregation at Duke Chapel*

Today's Offering | All of today's cash offerings and checks written to Duke University Chapel will be used to support the Chapel's student engagement programming. You are invited to give online at chapel.duke.edu/offering. You may also give directly to the Congregation at Duke University Chapel by check written to the Congregation at Duke University Chapel or online at congregation.chapel.duke.edu and access the giving link. Send checks to: Duke University Chapel, Box 90974, Durham, NC 27708-0974.

Today's Flowers | The Advent Wreath is made possible by the Elizabeth Lucina Gotham Memorial Endowment, established by Dr. and Mrs. James H. Semans in loving memory of Elizabeth Gotham. The interior decorations and the wreaths on either side of the front entrance of the Chapel are given to the glory of God in celebration of the Christmas season by the Ferguson Family.

Liturgical Acknowledgments | Confession and Prayer for Illumination. Adapted from *The Worship Sourcebook*, 1st ed. Faith Alive Christian Resources, © 2004. **So Bring Him Incense, Gold, and Myrrh (Doxology).** Text: William C. Dix, 1837–1898. Music, GREENSLEEVES: English ballad, 16th cent. Public domain.

Today's Guest Musicians | Founded in 1986, the Raleigh Flute Choir is one of the nation's leading professional flute choirs. Performing regularly throughout North Carolina, the ensemble has also played at The White House and in Chicago, Orlando, Charleston, and Williamsburg. Their varied repertoire ranges from arrangements of familiar orchestral pieces to world premieres of contemporary flute choir literature. The Raleigh Flute Choir has recorded four albums, with the most recent one, *Kaleidoscope*, available on Apple Music. For more information, visit raleighflutechoir.org.

EPIPHANY BLESSING AND CHALKING OF THE DOOR

*Since medieval times Christians have blessed homes and places of worship on or around the feast of the Epiphany. All are invited to return home with this insert, mark their home's threshold, and ask God's blessing using the liturgy printed here. The letters C, M, and B stand for the traditional names of the biblical magi (Caspar, Melchior, and Balthazar) as well as the Latin phrase *Christe mansionem benedicat* ("May Christ bless this house").*

Leader: May peace be to this house and to all who enter here.

People: By wisdom a house is built and through understanding it is established; through knowledge its rooms are filled with rare and beautiful treasures.

*Reading | John 1:1-4, 14, 16

In the beginning was the Word, and the Word was with God, and the Word was God. He was in the beginning with God. All things came into being through him, and without him not one thing came into being. What has come into being in him was life, and the life was the light of all people. The Word became flesh and lived among us, and we have seen his glory, the glory as of a father's only son, full of grace and truth. From his fullness we have all received, grace upon grace.

*Inscription | This inscription is made with chalk above the primary entrance:

20 † C M B † 26

The magi of old, known as

C Caspar,
M Melchior, and
B Balthasar,

followed the star of God's Son who came to dwell among us

20 two thousand
26 and twenty-six years ago.
† Christ, bless this house,
† and remain with us throughout the new year.

*Prayer of Blessing

Let us pray.

O God, you revealed your Son to all people by the shining light of a star. We pray that you bless this place of refuge and all who gather here with your gracious presence. May your love be our inspiration, your wisdom our guide, your truth our light, and your peace our benediction; through Christ our Lord. Amen.

ACCESSIBILITY

Hearing assistance technology, as well as large-print worship guides and hymnals, is available at the AV console in the rear of the Chapel. For other accommodations, please approach a minister or usher.

RESTROOMS

For public restrooms, exit the Chapel through the main front doors and turn left to enter the Divinity School. Restrooms are along the Divinity School hallway.

TOURS

Meet a docent outside in front of the Chapel immediately following the service for a free, forty-five minute tour of Duke Chapel's history, architecture, and life.

LEARN MORE AND ENGAGE

Scan the QR codes to learn more about the missions and ministries of Duke Chapel and the Congregation at Duke University Chapel. Also, read this week's announcements, see upcoming events, and find out how to engage with the Chapel and the Congregation.



*The Congregation
at Duke Chapel*

chapel.duke.edu
919-681-9488
dukechapel@duke.edu

congregation.chapel.duke.edu
919-684-3917
congregation@duke.edu

401 Chapel Drive, Campus Box 90974, Durham, NC 27708