



Duke  
UNIVERSITY  
CHAPEL

BRIDGING FAITH & LEARNING

SERVICE OF WORSHIP  
Second Sunday of Christmas  
Sunday, January 5, 2025, 11:00 a.m.



Filippino Lippi, *Madonna and Child*, ca. 1483–84, The Metropolitan Museum of Art.

On this twelfth day of Christmas, the lessons speak to God’s trustworthiness amidst the dangers and toils of life. Psalm 84 concludes, “For the LORD God is a sun and shield; he bestows favor and honor. No good thing does the LORD withhold from those who walk uprightly. O LORD of hosts, happy is everyone who trusts in you.” Jeremiah tells of how God will return the scattered people of Israel, gathering them from afar as God turns their mourning to joy and their sorrow into gladness. Matthew’s gospel tells of God’s protection of Jesus and his family. When Herod seeks to kill the children of Israel, God’s messenger warns Joseph to flee with the holy family, as they become refugees in Egypt. When those seeking to kill Jesus died, a messenger of the LORD tells the holy family to return to Israel.

# Gathering

## Carillon

### Prelude

Cantata de chiesa: Chorale

Sigfrid Karg-Elert  
(1877–1933)  
arr. Thiago Bohm Bottega

The Ukrainian Child's Carol

arr. Brent Smith

Gesu Bambino

Pietro Yon  
(1886–1943)  
arr. Mary Jean Simpson

Bring a Torch, Jeannette, Isabella

arr. Catherine McMichael

### Greeting and Call to Worship

#### \*Gathering Hymn | UMH 220

Angels from the Realms of Glory

REGENT SQUARE

#### \*Prayer of Confession and Words of Assurance | In unison:

**Almighty God, who sent a star to guide the magi to the holy child Jesus: we confess that we have not followed the light of your word. We have not searched for signs of your love in the world, or trusted good news to be good. We have failed to praise your Son's birth, and refused his peace on earth. We have expected little, and hoped for less. Forgive our doubt, and renew in us all fine desires, so we may watch and wait and once more hear the glad story of our Savior, Jesus Christ the Lord. Amen.**

The minister speaks words of assurance.

#### \*Peace | All exchange signs and words of God's peace.

Minister: The peace of the risen Christ be with you.

People: **And also with you.**

\*All rise as able

## Proclamation

Prayer for Illumination | In unison:

**Light of life, you came in flesh, born into human pain and joy, and gave us power to be your children. Grant us faith, O Christ, to see your presence among us, and send your Spirit now to illuminate your word. Amen.**

Old Testament Lesson | OT page 690 in pew Bibles.

Jeremiah 31:7–14

Lector: The word of the Lord.

**People: Thanks be to God.**

Psalmody | Chanted by the cantor.

Psalm 84

setting: Timothy E. Kimbrough

How dear is Your dwelling-place,  
ADONAI of Hosts!  
My life is wholly spent with longing for the courts of ADONAI.  
My heart and my flesh thrill to the living God.  
Even the bird has found a home, and the swallow a nest for herself where  
she places her young—  
near Your altars, ADONAI of Hosts, my King and my God!  
It is well with those who dwell in Your house;  
ever will they praise You! *Selah.*  
It is well with anyone whose refuge is in You—  
pilgrim-ways in their hearts!  
Traversing the Valley of Baka, they find it a wellspring,  
even as the early rain mantles it with blessings.  
They go from strength to strength;  
they appear before God in Zion.  
ADONAI God of Hosts, hear my prayer!  
Give ear, O God of Jacob! *Selah.*  
Our Shield—see, O God,  
and gaze upon the face of Your anointed.  
How much better a day in Your courts than a thousand in my own  
chamber;  
standing at the threshold of my God's house than dwelling in tents  
of wickedness.

For Sun and Shield is ADONAI our God, grace and glory ADONAI gives;  
He does not withhold what is good from those who walk with integrity.  
ADONAI of Hosts,  
it is well with anyone who trusts in You!

—*Trans. Ellen F. Davis*

\*Gradual Hymn | See printed hymn at the end of the worship guide, stanzas 1–3.

Of the Father's Love Begotten

DIVINUM MYSTERIUM

\*Gospel Lesson | NT page 2 in pew Bibles.

Matthew 2:13–23

Lector: The word of the Lord.

**People: Thanks be to God.**

\*Gradual Hymn | See printed hymn at the end of the worship guide, stanzas 4–5.

Of the Father's Love Begotten

DIVINUM MYSTERIUM

Sermon

Swaddling Clothes and the Strength of the Christian

Response

Call to Prayer

Minister: The Lord be with you.

**People: And also with you.**

Minister: Let us pray.

Prayers of the People | The congregation responds to each petition:

**People: Hear our prayer.**

Offertory Music

'Twas in the Moon of Wintertime

arr. Anne McGinty

So bring him in - cense, gold, and myrrh; come peas - ant,  
king, to own him. The King of kings sal - va - tion brings; let  
lov - ing hearts en - throne him. This, this is Christ the  
king, whom shep - herds guard and an - gels sing; haste, haste to  
bring him laud, the babe, the son of Mar - y!

## Thanksgiving and Holy Communion

### \*The Great Thanksgiving

Minister: The Lord be with you.

**People: And also with you.**

Minister: Lift up your hearts.

**People: We lift them up to the Lord.**

Minister: Let us give thanks to the Lord our God.

**People: It is right to give our thanks and praise.**

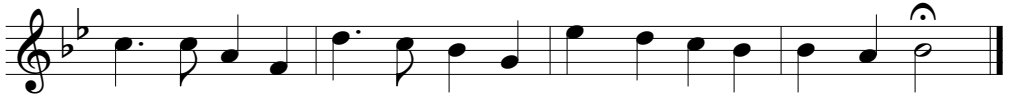
Minister: God of grace and truth ... we join the company of heaven in the song of your never-ending glory.



Ho-ly, ho-ly, Lord most ho-ly, God of pow'r and God of might:



heav'n and earth re-veal your glo-ry. Hail, hos-an-na, Lord of light!



Bless-ed be the com-ing Sav-ior. Hail, hos-an-na, Lord of light!

Minister: ... Great is the mystery of faith.



Christ has died, Christ is ris-en, Christ will come a-gain!

Minister: Astonishing God, ... we behold you face to face, one God, Father, Son, and Holy Spirit.



A - men, a - men, a - men, a - men, a - men, a - men.

**\*The Lord's Prayer** | All are encouraged to pray the Lord's Prayer in the language of their choosing. The text is found on page 895 at the back of the hymnal.

**Sharing of the Bread and Wine** | All who love Christ, earnestly repent of their sins, and seek to be at peace with God and neighbor are invited to receive Communion. Bread and wine are used for Communion. After a server places bread in your hands, you may receive wine by dipping your bread into the chalice. If you desire gluten-free bread or grape juice, or to drink from a common cup, these are available from servers at the front near Memorial Chapel and near the back opposite the attendant's desk. If you will not receive Communion, you are welcome to come forward to receive a blessing, indicated by crossing your arms over your chest.

## Voluntary

Wexford Carol

arr. Ann Cameron Pearce

## Communion Hymn | UMH 219

What Child Is This

GREENSLEEVES

## \*Post-Communion Prayer

## Sending Forth

### \*Benediction

### \*Sending Hymn | UMH 245

The First Noel

THE FIRST NOEL

## Postlude

Noël grand jeu et duo

Louis-Claude d'Aquin  
(1694–1772)

## Carillon

## TODAY IN WORSHIP

### Presiding Ministers

Bruce Puckett . . . . . *Assistant Dean, Duke University Chapel*

Kenneth Moland . . . . . *Pastoral Assistant for Pastoral Care, Congregation at Duke Chapel*

### Preacher

Timothy Kimbrough . . . . . *Director, Anglican Episcopal House of Studies,  
Jack and Barbara Bovender Professor of the Practice of Anglican Studies; Duke Divinity School*

### Lectors

Sharon Anjali Jones . . . . . *Member, Congregation at Duke Chapel*

Zebulon Highben . . . . . *Director of Chapel Music, Duke University Chapel*

### Musicians

Chad Fothergill . . . . . *Chapel Organist, Duke University Chapel*

Zebulon Highben . . . . . *Director of Chapel Music, Duke University Chapel*

Raleigh Flute Choir . . . . . *Guest Ensemble*

Rosene Rohrer . . . . . *Co-manager, Raleigh Flute Choir*

## Head Usher

Ken Arneson . . . . . *Member, Congregation at Duke Chapel*  
James Ferguson . . . . . *Member, Congregation at Duke Chapel*

**Today's Guest Preacher** | The Very Rev. Timothy Kimbrough is the director of the Anglican Episcopal House of Studies and the Jack and Barbara Bovender Professor of the Practice of Anglican Studies at Duke Divinity School. He was previously dean of Christ Church Cathedral, Nashville, in the Diocese of Tennessee (The Episcopal Church). Born in Birmingham, Alabama, he grew up living in North Carolina, New Jersey, and West Germany. He holds bachelor of arts and master of divinity degrees from Duke University. He is an ordained priest in the Episcopal Church and has served congregations in North Carolina, South Carolina, New Jersey, Tennessee, South Africa, and the Philippines. At Duke, Rev. Kimbrough teaches courses in Anglican studies with a special emphasis on the *Book of Common Prayer* and Canon Law. His musical compositions are included in a number of hymnals, music series, and other volumes.

**Today's Guest Musicians** | Founded in 1986, the Raleigh Flute Choir is one of the nation's leading professional flute choirs. Performing regularly throughout North Carolina, the ensemble has also played at The White House and in Chicago, Orlando, Charleston, and Williamsburg. Their varied repertoire ranges from arrangements of familiar orchestral pieces to world premieres of contemporary flute choir literature. The Raleigh Flute Choir has recorded four albums, with the most recent one, *Kaleidoscope*, available on Apple Music. For more information, visit [raleighflutechoir.org](http://raleighflutechoir.org).

**Today's Offering** | All of today's cash offerings and checks written to Duke University Chapel will be used to support the Chapel's Development Fund for Mission and Ministry. Give online at [chapel.duke.edu/offering](http://chapel.duke.edu/offering). Send checks to: Duke University Chapel, Box 90974, Durham, NC 27708-0974.

**Today's Flowers** | The Advent Wreath is made possible by the Elizabeth Lucina Gotham Memorial Endowment, established by Dr. and Mrs. James H. Semans in loving memory of Elizabeth Gotham. The wreaths on either side of the front entrance to the Chapel and the interior decorations are given to the glory of God in celebration of the Christmas season by Dr. and Mrs. James G. Ferguson, Jr.

**Liturgical Acknowledgments** | **Of the Father's Love Begotten.** Text: Marcus Aurelius Clemens Prudentius (348–413); tr. composite. Music, DIVINUM MYSTERIUM: Plainsong mode V (13th cent.). Public domain. **So Bring Him Incense, Gold, and Myrrh** (Doxology). Text: William C. Dix, (1837–1898). Music, GREENSLEEVES: English ballad, 16th cent. Public domain.



## ENGAGE

---

**University Prayer of Thanksgiving** | Each week, we focus on a different campus unit, school, or department for whom to give thanks to God for their service and contributions to the wider university community and beyond. Today, we give thanks for the Department of Physics.

**Restrooms in Divinity School** | Public restrooms are available in the Divinity School. To access them, exit the Chapel through the main front doors and enter the Divinity School. Restrooms are along the hallway in the Divinity School.

**Tour After the Service** | Learn about the history, architecture, and life of Duke Chapel on a tour immediately following the service. The tour is free and lasts about forty-five minutes. Meet the docent outside in front of the Chapel.

**Epiphany Lessons and Carols** | A worship service today, January 5, at 4:00 p.m. will mark the twelfth night of Christmas and the beginning of the season of Epiphany. Based on the formula made famous by the Christmas Lessons and Carols from King's College, Cambridge, this service follows a similar pattern of readings, choral anthems, and congregational hymns.

**Singing the Psalms** | You are invited to join musicians and worship leaders from Duke Chapel as we pray the book of Psalms from beginning to end on Friday, January 17, in the Divinity School's Goodson Chapel. The singing will begin with Psalm 1 at 8:00 a.m. and continue throughout the day with brief breaks, ending in the late afternoon. Participants are welcome to come and go, and stay for as little or as long as they wish. A variety of musical settings for the Psalms will be paired with a new English translation of the texts created by Dr. Ellen F. Davis, Amos Ragan Kearns Distinguished Professor of Bible and Practical Theology at Duke Divinity School and a member of Duke Chapel's National Advisory Board.

## ENGAGE

---

**Sacred Choral Clinic with Dr. Pearl Shangkuan** | Dr. Pearl Shangkuan, National President-Elect of the American Choral Directors Association (ACDA), will lead a sacred choral clinic at Duke Chapel on Saturday, January 25, 2025, from 9:00 a.m. to 12-noon. Church choir directors and singers are invited to register for this special event with Dr. Shangkuan, professor emerita of music at Calvin University in Grand Rapids, Michigan. Participants will sing with the Duke Chapel Choir and other choirs from around North Carolina and surrounding states, as Dr. Shangkuan teaches vocal techniques and introduces choral repertoire appropriate for the upcoming Lent and Easter seasons. Learn more and register at [chapel.duke.edu/choralclinic](http://chapel.duke.edu/choralclinic).

**Alternative Spring Break Trip** | Students are invited on the “Ghosts of the Holy City: Race, Place, and Faith in Charleston SC” alternative spring break trip March 9–11, 2025. Plans include visiting the International African American Museum, the historic Mother Emanuel AME Church, and the Avery Research Center for African American Culture at the College of Charleston, in addition to having conversations over meals with local leaders. We will be accompanied on this experience by students from North Carolina Central University. For more information, contact Rev. Racquel Gill at [racquel.gill@duke.edu](mailto:racquel.gill@duke.edu).

**Sunday Morning Classes** | Sunday morning Christian Education classes are available for all ages from 9:45–10:45 a.m., with coffee and refreshments provided at 9:30 a.m. Classes meet in the lowest level of the Westbrook building. New participants are welcome at any time. Contact [congregation@duke.edu](mailto:congregation@duke.edu) for additional information.

# GRADUAL HYMN | Of The Father's Love Begotten



1 Of the Fa - ther's love be - got - ten ere the worlds be -  
 2 Oh, that birth for - ev - er bless - ed, when the vir - gin,  
 3 This is he whom seers in old time chant - ed of with  
 4 Let the heights of heav'n a - dore him; an - gel hosts, his  
 5 Christ, to thee, with God the Fa - ther, and, O Ho - ly



gan to be, he is Al - pha and O - me - ga,  
 full of grace, by the Ho - ly Ghost con - ceiv - ing,  
 one ac - cord, whom the voic - es of the proph - ets  
 prais - es sing; pow'rs, do - min - ions, bow be - fore him  
 Ghost, to thee, hymn and chant and high thanks - giv - ing



he the source, the end - ing he, of the things that are, that  
 bore the Sav - ior of our race, and the babe, the world's re -  
 prom - ised in their faith - ful word; now he shines, the long - ex -  
 and ex - tol our God and King; let no tongue on earth be  
 and un - wea - ried prais - es be: hon - or, glo - ry, and do -



have been, and that fu - ture years shall see,  
 deem - er, first re - vealed his sa - cred face,  
 pect - ed; let cre - a - tion praise its Lord  
 si - lent, ev - 'ry voice in con - cert ring  
 min - ion, and e - ter - nal vic - to - ry



ev - er - more and ev - er - more.  
 ev - er - more and ev - er - more.  
 ev - er - more and ev - er - more.  
 ev - er - more and ev - er - more.  
 ev - er - more and ev - er - more! A - men.

## ACCESSIBILITY

---

Hearing assistance units, as well as large-print worship guides and hymnals, are available at the AV console in the rear of the Chapel. There, you can also find directions to download a listen-assist app on your phone. Please let us know if you need other accommodations by approaching a minister or usher, or email us at [dukechapel@duke.edu](mailto:dukechapel@duke.edu).

## LET'S KEEP IN TOUCH

---

We would like to get to know you. What are your questions? What is your story? Take a moment to fill out a very brief form and a Chapel minister or other staff member will contact you soon. Scan the QR code or visit [chapel.duke.edu/connect](http://chapel.duke.edu/connect).



**Duke**  
UNIVERSITY  
**CHAPEL**



*The Congregation  
at Duke Chapel*

[chapel.duke.edu](http://chapel.duke.edu)

919-681-9488

401 Chapel Drive  
Campus Box 90974  
Durham, NC 27708

[dukechapel@duke.edu](mailto:dukechapel@duke.edu)

Connect with us



@DukeChapel  
#FindSanctuary

[congregation.chapel.duke.edu](http://congregation.chapel.duke.edu)

919-684-3917

The Congregation at Duke University Chapel joyfully welcomes all persons regardless of age, race, class, origin, sexual orientation, gender identity, or any other distinction and invites membership and participation in all of its ministries.

Please email [congregation@duke.edu](mailto:congregation@duke.edu) to receive the weekly eNews.