



Duke
UNIVERSITY
CHAPEL

Service of Worship

Tenth Sunday after Pentecost

August 2, 2015

Baldwin Auditorium

Eleven o'clock in the morning

✧ *Bridging Faith and Learning* ✧



'Rustic Bread,' photograph by Nofarrada on Pixabay

Jesus is the Bread of Life, the only one who can truly meet our deepest needs. Our scripture readings today invite us into a place of dependence upon him, to be built up in Christian maturity, and to live in unity. We are reminded that this call to faithful obedience is given equally to all, with King David greatly displeasing the Lord by his sin. Yet David returns to the Lord with a repentant heart and is forgiven because he is loved. We also must make that journey of repentance and recognize our place in the body of Christ as forgiven and loved people. Then, as St. Paul writes, we will truly be united to Jesus and to one another as God's family.

At the close of today's service, the Lord's Supper will be celebrated in Baldwin Auditorium by the seats at the front left of the stage. Immediately following Communion, a service of prayer for healing will be held in the same location. The service consists of prayers for healing and wholeness with anointing and laying on of hands. All are invited.

During the prelude the congregation is asked to remain prayerfully or meditatively silent. The Chapel welcomes families with children; if at any time during the service your child needs a place for active play, please utilize the nursery in the basement of Baldwin.

GATHERING

PRELUDE

Pazienza

Percy Whitlock
(1903–1946)

GREETING AND ANNOUNCEMENTS

*PROCESSIONAL HYMN 441 (*Please see hymns at back of bulletin.*)

What Does the Lord Require

SHARPTHORNE

*PRAYER OF CONFESSION AND WORDS OF ASSURANCE (*in unison*)

The minister offers words of confession in three biddings, to which the congregation responds as follows:

Lord have mercy.

Lord have mercy.

Christ have mercy.

Christ have mercy.

Lord have mercy.

Lord have mercy.

The minister speaks words of assurance.

*PEACE

(All exchange signs and words of God's peace.)

PROCLAMATION

PRAYER FOR ILLUMINATION (*in unison*)

Almighty Father, who sent your Holy Spirit to be the life and light of your Church: open our hearts to the riches of your grace, that we may bring forth the fruit of the Spirit in love and joy and peace; through Jesus Christ our Lord. Amen.

OLD TESTAMENT LESSON—2 Samuel 11:26–12:13a

Lector: This is the word of the Lord.

People: Thanks be to God.

ANTHEM

Panis Angelicus

Marc-Antoine Charpentier
(1643–1704)

Panis angelicus
Fit panis hominum;
Dat panis coelicus
Figuris terminum:
O res mirabilis!
Manducat Dominum
Pauper, servus et humilis.

*The bread of the angels
Becomes the bread of man;
The bread of heaven
Gives an end to all symbols:
O wondrous thing!
The body of the Lord
Nourishes the poor, the servant, and
the humble.*

NEW TESTAMENT LESSON—Ephesians 4:1–16

Lector: This is the word of the Lord.

People: Thanks be to God.

*GOSPEL LESSON—John 6:24–35

Lector: This is the word of the Lord.

People: Thanks be to God.

SERMON—Bread for the World

RESPONSE

*RESPONSE HYMN 565

Father, We Thank You

RENDEZ A DIEU

*THE APOSTLES' CREED

**I believe in God the Father Almighty, maker of heaven and earth;
And in Jesus Christ his only Son our Lord; who was conceived
by the Holy Spirit, born of the Virgin Mary, suffered under
Pontius Pilate, was crucified, dead, and buried; he descended
into hell; the third day he rose from the dead; he ascended
into heaven, and sitteth at the right hand of God the Father
Almighty; from thence he shall come to judge the quick and
the dead.**

**I believe in the Holy Spirit, the holy catholic church, the
communion of saints, the forgiveness of sins, the resurrection
of the body, and the life everlasting. Amen.**

CALL TO PRAYER

Minister: The Lord be with you.

People: And also with you.

Minister: Let us pray.

PRAYERS OF THE PEOPLE

(The congregation responds to each petition: "Hear our prayer.")

OFFERTORY ANTHEM

Domine Deus, from *Gloria* RV 589

Antonio Vivaldi
(1678–1741)

Domine Deus, Rex caelestis, Deus Pater omnipotens.
Lord God, King of Heaven, God the Father Almighty.

*DOXOLOGY

LASST UNS ERFREUEN

**Praise God from whom all blessings flow;
Praise God, all creatures here below; Alleluia, Alleluia!
Praise God above, ye heavenly host,
Praise Father, Son, and Holy Ghost. Alleluia, Alleluia,
Alleluia, Alleluia, Alleluia.**

*A child and youth member of the Congregation at Duke University Chapel
bring forward offerings collected in the children and youth Sunday School classes.*

THANKSGIVING

*PRAYER OF THANKSGIVING

*THE LORD'S PRAYER

**Our Father, who art in heaven, hallowed be thy name. Thy
kingdom come, thy will be done on earth as it is in heaven.
Give us this day our daily bread. And forgive us our trespasses,
as we forgive those who trespass against us. And lead us not
into temptation, but deliver us from evil. For thine is the
kingdom, and the power, and the glory, for ever. Amen.**

SENDING FORTH

*BENEDICTION

*CLOSING PROCESSION: HYMN 127

Guide Me, O Thou Great Jehovah

CWM RHONDDA

POSTLUDE

Wir glauben all' an einen Gott, BWV 680
We All Believe in One True God

Johann Sebastian Bach
(1685–1750)

**All who are able may stand.*

PRAYERS FOR THE WEEK

This morning we give thanks for the summer camps and other summer programs of the University. We celebrate how they encourage and train young people in athletic and intellectual pursuits.

In Durham, we remember those who encounter the criminal justice system as attorneys, judges, and jury members, and those who face trial.

MINISTRY OF WORSHIP

Presiding Ministers	The Rev. Dr. Carol Gregg The Rev. Bruce Puckett
Preacher	The Rev. Dr. Luke Powery
Lectors	Mr. Frank Coble <i>Member of the Congregation at Duke Chapel</i> Mr. Stephen Harper <i>Member of the Congregation at Duke Chapel</i>
Soloist	Ms. Samantha Arten
Organist	Mr. Christopher Jacobson
Presiding Minister over Post-Service Communion	The Rev. Bruce Puckett
Head Ushers	Dr. James Ferguson and Mr. Rick Wilfong

MOVE TO PAGE AUDITORIUM

Next Sunday, August 9, is our first worship service together in Page Auditorium. Aside from Christmas and Easter, this will be the location of Sunday worship until the Chapel opens after restoration.

SERVICE TIME: The service time remains the same, at 11:00 a.m.

PARKING: Parking will be free in the Bryan Center parking garage (125 Science Drive) and surface lot until 1:00 p.m.

NURSERY: Nursery facilities will be available on the second floor, in the Box Office room directly opposite the Quad entrance to the Auditorium.

DIRECTIONS: Page Auditorium is located on West Campus next to Duke Chapel. As you walk from the Bryan Center parking garage, Page is ahead and to your left. Walk up the stairs between Duke Chapel and Page Auditorium to enter the main doors and for the nursery. Note: The handicapped entrance and direct access to orchestra level seating is located at the side of the auditorium off of the Bryan Center parking lot.

CHAPEL ANNOUNCEMENTS

TODAY'S FLOWERS—The flowers this morning are given to the glory of God by the Nan & Taylor Cole Chapel Endowment.

TODAY'S OFFERING—All of today's cash offerings and undesignated checks will be used for the Chapel Development Fund. The Chapel's current focus is to upgrade the Chapel cameras and video capabilities to digital and high definition in order to better serve the thousands of worshipers locally, in Duke Hospital, and around the globe who tune in weekly.

BIBLES—As pew Bibles are not available during this year of transition, please do feel free to bring your own print or electronic version to worship.

SERMONS AVAILABLE—Each week, a downloadable PDF, podcast, and webcast of sermons are available on the Chapel's website, chapel.duke.edu. Paper copies are also usually available in the lobby of Baldwin Auditorium after the service.

CHORAL VESPERS AND EVENSONG

You are warmly invited to these upcoming services:

CHORAL VESPERS: The Vespers Ensemble leads the weekly Choral Vespers service on Thursdays at 6 p.m in Goodson Chapel, beginning September 3. This meditative 40-minute candlelit service consists of scripture readings, prayers, and sacred choral music spanning from the Renaissance through today. In addition to weekly service singing, the choir performs one concert per semester, mostly focusing on early music from the Renaissance and Baroque periods. For more information please contact Brian Schmidt at brian.schmidt@duke.edu or 919-684-3855.

CHORAL EVENSONG: Though new to Duke, Choral Evensong is a centuries-old tradition that continues to be prayed everyday all over the world. It will be offered every Sunday beginning August 30 at 4 p.m. in Goodson Chapel. All are welcome. Drawn from the 1662 Book of Common Prayer all are invited to enter into a sacred space of reflection through music, scripture, and prayers that have shaped Christian lives for centuries. For more information please contact Christopher Jacobson at christopher.jacobson@duke.edu or 919-684-6388. Note: incense will be used at this service.



THE CONGREGATION AT DUKE UNIVERSITY CHAPEL

919-684-3917 • www.congregation.chapel.duke.edu

The following Congregation opportunities are open to all.

ON THE MOVE—Effective this week, the location of worship, Sunday classes, and congregation offices will change as follows:

- **Worship:** Page Auditorium beginning August 9
- **Sunday Classes:** Lowest level of the Westbrook building beginning August 9
- **Congregation Offices:** Lower level of Northgate Mall, Suite 662, effective August 4

SUMMER CHRISTIAN EDUCATION—Weekly Christian education is offered on Sunday mornings from 9:45 a.m. to 10:45 a.m. in the Westbrook Building. New participants are welcome any time.

- **Wee Praise:** For children ages 0-3 with parents/caregivers in 0011 WB
- **Children/Youth Choir:** For children age 4 and up and youth in 0014 WB
- **Adult/Youth Class:** Bible Study on the Acts of the Apostles in 0013 WB

VOLUNTEER TUESDAY—Volunteers are needed to help unpack the contents of the Congregation office on Tuesday, August 4. Please contact the office if you are available to help set up the office in the temporary location in the lower level of Northgate mall, Suite 662.

BACK-TO-SCHOOL SALES—Whether or not you have children, please consider shopping back-to-school sales. The Mission Committee will be collecting school supplies for two Durham high schools today and on August 9. Items most in need include loose-leaf paper, spiral one-subject notebooks, three-ring binders, pens, colored pencils, and markers.

SUNDAES ON MONDAY—Women are invited to a night of fellowship and brainstorming regarding the women's ministry of the Congregation. Join us for ice cream with all the fixin's at Kate DeAlmeida's house at 2029 Markham Drive in Chapel Hill at 7:00 p.m. on Monday, August 3. The group will discuss and plan events for the upcoming school year and determine the direction of the women's ministry. If you plan to attend, please contact the Congregation office.

YOUNG ADULT FELLOWSHIP DINNER—On Friday, August 7 at 6:00 p.m. young adults and their families will gather in the picnic area at Shannon Plaza on Shannon Road, near Only Burger. Food may be purchased from one of the several nearby restaurants. In case of rain, the group will be inside Pop's Pizza.

YOUTH FELLOWSHIP POOL PARTY—Youth and their families are invited to a pool party, Sunday, August 9 at 1:00 p.m. at the Duke Faculty Club, 10 Faculty Club Drive, on Sunday, August 9. Pizza will be delivered at 1:30 p.m. Please bring a side or sweet to share. Please call the Congregation office at 919-684-3917 if you plan to attend.

What Does the Lord Require

1. What does the Lord re - quire for praise and
 2. Rul - ers of earth, give ear! Should you not
 3. All who gain wealth by trade, for whom the
 4. How shall our life ful - fill God's law so

of - fer - ing? What sac - ri - fice, de - sire, or trib - ute
 jus - tice know? Will God your plead - ing hear, while crime and
 work - er toils, think not to win God's aid, if greed your
 hard and high? Let Christ en - due our will with grace to

bid you bring? Do just - ly; love mer - cy; walk
 cruel - ty grow? Do just - ly; love mer - cy; walk
 com - merce soils. Do just - ly; love mer - cy; walk
 for - ti - fy. Then just - ly, in mer - cy, we'll

1-3 hum - bly with your God.
 hum - bly with your God.
 hum - bly with your God.
 4 hum - bly walk with God.

WORDS: Albert F. Bayly, 1949; alt. (Mic. 6:6-8)

MUSIC: Erik Routley, 1968

SHARPTHORNE

66.66.336

Words © 1949 Albert F. Bayly; music © 1969 Hope Publishing Co.

Father, We Thank You

1. Fa - ther, we thank you, for you plant - ed your ho - ly
 2. Watch o'er your church, O Lord, in mer - cy, save it from

name with - in our hearts. Knowl - edge and faith and life im - mor - tal
 e - vil, guard it still; per - fect it in your love, u - nite it,

Je - sus your Son to us im - parts. Lord, you have made all for your
 cleansed and con - formed un - to your will. As grain, once scat - tered on the

plea - sure, and given us food for all our days, giv - ing in
 hill - sides, was in the bro - ken bread made one, so from all

Christ the bread e - ter - nal; yours is the power, be yours the praise.
 lands your church be gath - ered in - to your king - dom by your Son.

WORDS: Greek, 2nd cent.; trans. by F. Bland Tucker and others, 1939, 1982

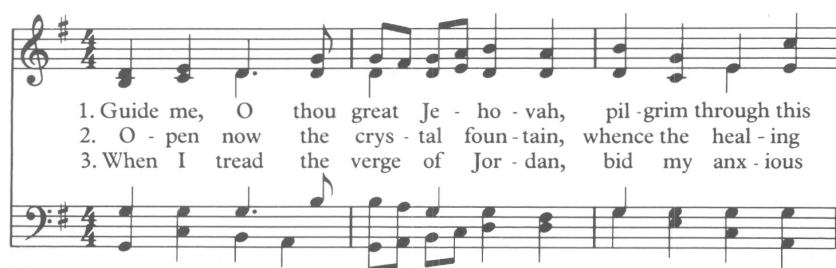
MUSIC: Attr. to Louis Bourgeois, 1551; harm. by John Wilson, 1979

RENDEZ À DIEU

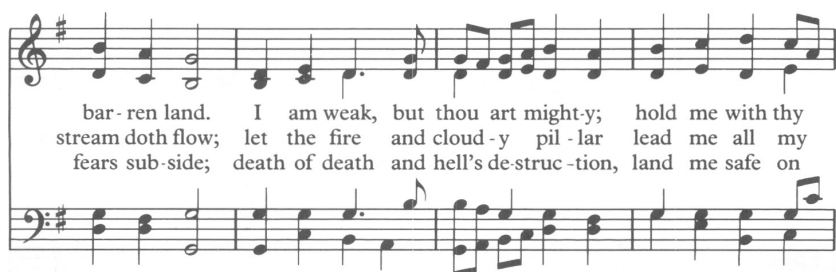
98.98 D

Trans. © 1940, 1943, renewed 1971; 1985 rev. The Church Pension Fund; harm. © 1979 Hope Publishing Co.

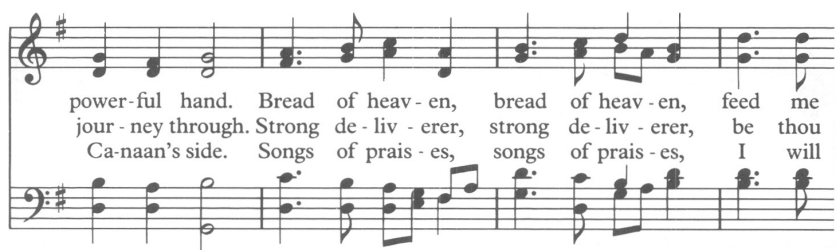
Guide Me, O Thou Great Jehovah 127



1. Guide me, O thou great Je - ho - vah, pil - grim through this
 2. O - pen now the crys - tal foun - tain, whence the heal - ing
 3. When I tread the verge of Jor - dan, bid my anx - ious



bar - ren land. I am weak, but thou art might-y; hold me with thy
 stream doth flow; let the fire and cloud - y pil - lar lead me all my
 fears sub-side; death of death and hell's de-struc-tion, land me safe on



power-ful hand. Bread of heav - en, bread of heav - en, feed me
 jour - ney through. Strong de - liv - erer, strong de - liv - erer, be thou
 Ca-naan's side. Songs of prais - es, songs of prais - es, I will



till I want no more; (want no more) feed me till I want no more.
 still my strength and shield; (strength and shield) be thou still my strength and shield.
 ev - er give to thee; (give to thee) I will ev - er give to thee.

WORDS: William Williams, 1745; trans. from the Welsh by Peter Williams and
 the author, 1771
 MUSIC: John Hughes, 1907

CWM RHONDDA
 87.87.87

FOR WORSHIPERS AND VISITORS

† Prayer requests may be emailed to chapel-prayers@duke.edu.

† Tours of Duke Chapel are suspended until the nave re-opens.

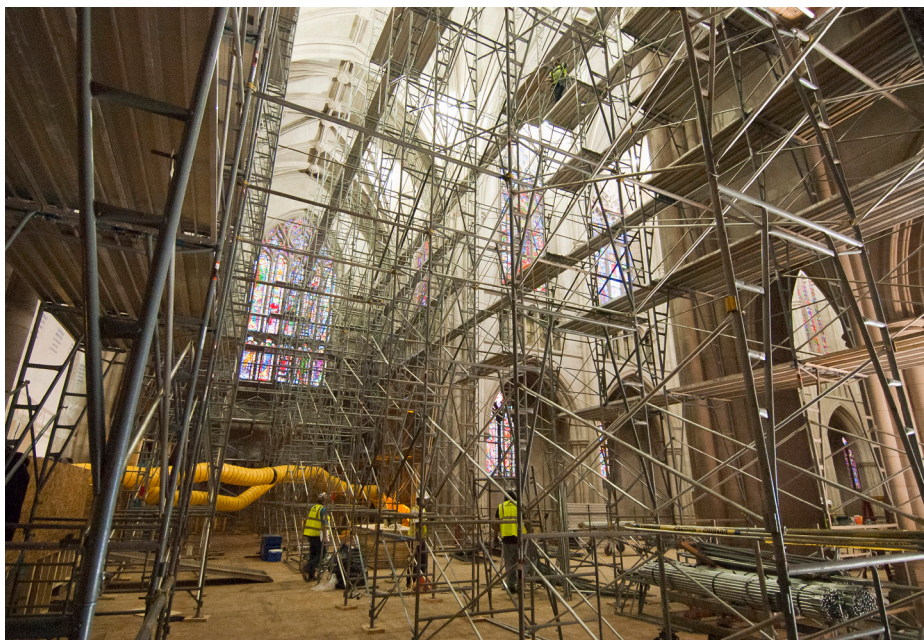
† Hearing assistance units are available in the lobby of Baldwin Auditorium. See the attendant if you would like to use one of our large-print bulletins for the worship service.

FOR FAMILIES AND CHILDREN

† Children 4 and younger are invited to the nursery located in the Baldwin basement, beginning at 10:50 a.m. each week. Capacity is limited. Parents are welcome to feed or change infants; pagers are available for parents to keep with them during worship.

† Children's bulletins are available from the ushers, and activity bags are available in the entryway of Baldwin for children 5 or younger. Please return the bags at the end of the service.

We invite you to consider joining the Congregation at Duke Chapel. The Congregation is an interdenominational church with a variety of vibrant ministries, including discipleship and spiritual formation (for children, youth, and adults), mission and outreach, and pastoral care. Please email congregation@duke.edu or call 919-684-3917 for information.



Please continue to pray for the Chapel and all those working on its restoration. Photo Credit: Ray Walker,
Staff Architect and Project Manager, Duke Facilities Management

DUKE UNIVERSITY CHAPEL

Duke Chapel is a Christian church of an unusually interdenominational character, with a tradition of stirring music, preaching, and liturgy. It is also a grand building, suitable for hosting major events in the life of the University and its members; it further acts as a moderator for the diversity of religious identity and expression on campus. We welcome you to our life of worship, learning, dialogue, and service, especially during this year of the Chapel's restoration where we will gather to worship God in different places across Duke's campuses.

chapel.duke.edu • Box 90974, Durham, NC 27708 • 919-684-2572

STAFF OF DUKE UNIVERSITY CHAPEL

The Rev. Dr. Luke Powery	Dean of the Chapel
Ministry	
Dr. Christy Lohr Sapp	Associate Dean for Religious Life
Mr. Jack Adams	Interim Worship Coordinator
Dr. Adam Hollowell	Director of Student Ministry
The Rev. Bruce Puckett	Director of Community Ministry
Mr. Joshua Lazard	C. Eric Lincoln Minister for Student Engagement
Ms. Gerly Ace	Staff Specialist for Student Ministry
Music	
Dr. Rodney Wynkoop	Director of Chapel Music
Dr. Robert Parkins	University Organist
Mr. Christopher Jacobson	Chapel Organist
Dr. Brian Schmidt	Assistant Conductor and Administrative Coordinator of Chapel Music
Mr. John Santoianni	Curator of Organs and Harpsichords
Mr. J. Samuel Hammond	University Carillonneur
Mr. Michael Lyle	Staff Assistant for Chapel Music
Administration	
Ms. Joni Harris	Assistant to the Dean
Ms. Adrienne Koch	Communications Specialist
Mr. James Todd	Multimedia Manager for Media Ministry
Ms. Sara Clark	Chapel Events and Wedding Coordinator
Ms. Ava West	Staff Assistant for Development
Ms. Lisa Moore	Accounting Specialist and Office Coordinator
Mr. Oscar Dantzler	Housekeeper
Staff of the Congregation at Duke University Chapel	
The Rev. Dr. Carol Gregg	Pastor
Ms. Phyllis Snyder	Children's Pastor
Mr. Nelson Strother	Administrative Assistant

PRAYER CARD

Thank you for worshipping with us. We invite you to write a prayer request in the space below and please place it in the offering plate. It will be offered up to God in confidence by the Chapel team this week.