



Duke  
UNIVERSITY  
CHAPEL

# Service of Worship

Seventh Sunday after Pentecost

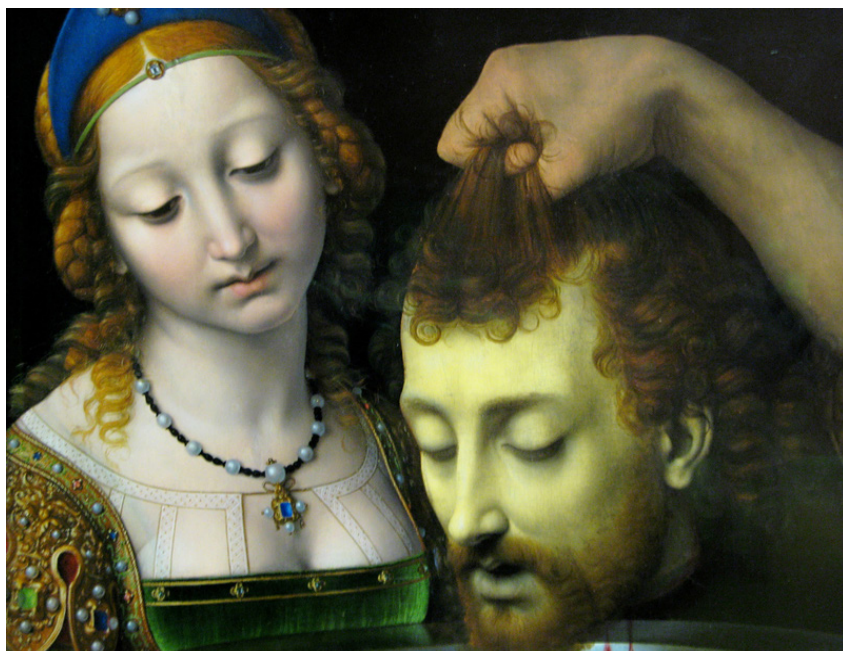
July 12, 2015

Baldwin Auditorium

Eleven o'clock in the morning

✻ *Bridging Faith and Learning* ✻

---



*"Salome with the Head of John the Baptist" by Andrea Solario*

What are you willing to risk for the Lord? In today's Scripture readings we see King David facing the scorn of his wife for worshipping God in public with abundant joy. The great prophet John the Baptist infuriates the powers of the day through his fearless commitment to preach repentance and the coming Kingdom of God, and he pays for this with his life, in gruesome fashion. We are also reminded, though, in the opening of Paul's letter to the Ephesians, of the lavish grace and spiritual blessings poured out by our Father on those who remain faithful to his Son Jesus.

*At the close of today's service, the Lord's Supper will be celebrated in Baldwin Auditorium, by the seats at the front left of the stage. Immediately following Communion, a service of prayer for healing will be held in the same location. The service consists of prayers for healing and wholeness with anointing and laying on of hands. All are invited.*

*During the prelude the congregation is asked to remain prayerfully or meditatively silent. The Chapel welcomes families with children; if at any time during the service your child needs a place for active play, please utilize the nursery in the basement of Baldwin.*

## GATHERING

### PRELUDE—

Prelude and Fugue in G major

Felix Mendelssohn  
(1809–1847)

Count Your Blessings

Johnson Oatman, Jr.  
(1856–1922)  
arr. Edwin O. Excell

Jazz Cantate

Andy Beck  
(b. 1974)

## GREETING AND ANNOUNCEMENTS

### \*PROCESSIONAL HYMN 194 (*Please see hymns at back of bulletin.*)

Morning Glory, Starlit Sky

MONKLAND

### \*PRAYER OF CONFESSION AND WORDS OF ASSURANCE (*in unison*)

**Most merciful God, we confess that we have sinned against you in thought, word, and deed, by what we have done, and by what we have left undone. We have not loved you with our whole heart; we have not loved our neighbors as ourselves. We are truly sorry and we humbly repent. For the sake of your Son Jesus Christ, have mercy on us and forgive us; that we may delight in your will, and walk in your ways; to the glory of your name. Amen.**

*The minister speaks words of assurance.*

### \*PEACE

*(All exchange signs and words of God's peace.)*

## PROCLAMATION

### PRAYER FOR ILLUMINATION (*in unison*)

**Merciful Father, you have prepared for those who love you such good things as pass our understanding: may your Spirit open your holy word to us and our hearts to you; through Jesus Christ our Lord. Amen.**

OLD TESTAMENT LESSON—2 Samuel 6:1–5, 12b–19

Lector: This is the word of the Lord.

People: **Thanks be to God.**

ANTHEM

Allegro Maestoso e Vivace

Mendelssohn

from Organ Sonata No. 4 in B-flat Major, Op. 65

NEW TESTAMENT LESSON—Ephesians 1:3–14

Lector: This is the word of the Lord.

People: **Thanks be to God.**

\*GOSPEL LESSON—Mark 6:14–29

Lector: This is the word of the Lord.

People: **Thanks be to God.**

SERMON—The Cost of Life

RESPONSE

\*RESPONSE HYMN 141

Children of the Heavenly Father

TRYGGARE KAN INGEN VARA

\*THE APOSTLES' CREED

**I believe in God the Father Almighty, maker of heaven and earth;**

**And in Jesus Christ his only Son our Lord; who was conceived by the Holy Spirit, born of the Virgin Mary, suffered under Pontius Pilate, was crucified, dead, and buried; he descended into hell; the third day he rose from the dead; he ascended into heaven, and sitteth at the right hand of God the Father Almighty; from thence he shall come to judge the quick and the dead.**

**I believe in the Holy Spirit, the holy catholic church, the communion of saints, the forgiveness of sins, the resurrection of the body, and the life everlasting. Amen.**

CALL TO PRAYER

Minister: The Lord be with you.

People: **And also with you.**

Minister: Let us pray.

PRAYERS OF THE PEOPLE

*(The congregation responds to each petition: "Hear our prayer.")*

OFFERTORY ANTHEM

Movement III, Andante Espressivo

Mendelssohn

from String Quartet No. 1, Op 12

arr. Verne Reynolds

**\*DOXOLOGY**

LASST UNS ERFREUEN

Praise God from whom all blessings flow;  
Praise God, all creatures here below; Alleluia, Alleluia!  
Praise God above, ye heavenly host,  
Praise Father, Son, and Holy Ghost. Alleluia, Alleluia,  
Alleluia, Alleluia, Alleluia.

**THANKSGIVING**

**\*PRAYER OF THANKSGIVING**

**\*THE LORD'S PRAYER**

Our Father, who art in heaven, hallowed be thy name. Thy kingdom come, thy will be done on earth as it is in heaven. Give us this day our daily bread. And forgive us our trespasses, as we forgive those who trespass against us. And lead us not into temptation, but deliver us from evil. For thine is the kingdom, and the power, and the glory, for ever. Amen.

**SENDING FORTH**

**\*BENEDICTION**

**\*CLOSING PROCESSION: HYMN 213**

Lift Up Your Heads, Ye Mighty Gates

TRURO

**POSTLUDE**

Movement IV, Molto Allegro e Vivace  
from String Quartet No. 1, Op 12

Mendelssohn  
arr. Verne Reynolds

*\*All who are able may stand.*

**PRAYERS FOR THE WEEK**

*This morning we give thanks for the Office of the University Counsel. We are grateful for its work to ensure the University is compliant with the order of law.*

*In Durham, we lift up organizations that provide access to capital for first-time homeowners and small businesses. We also remember those who work for economic stability within our community.*

---

## MINISTRY OF WORSHIP

Presiding Minister	The Rev. Dr. Carol Gregg
Preacher	The Rev. Dr. Luke Powery
Lectors	Ms. Leisa Dennehy <i>Member of the Congregation at Duke Chapel</i> Mr. David Bottjen <i>Member of the Congregation at Duke Chapel</i>
Guest Organist	Ms. Jane Lynch
Guest Musicians	Amalgam Brass
Guest Choir	Congregation Children and Youth Choir
Choir Conductor	Ms. Kaity Woodrum
Presiding Minister over Post-Service Communion	The Rev. Dr. Carol Gregg
Head Ushers	Dr. James Ferguson and Mr. Rick Wilfong

---

## CHAPEL ANNOUNCEMENTS

**TODAY'S FLOWERS**—The flowers today are given to the glory of God by the Erlenbach Family Trust.

**TODAY'S OFFERING**—All of today's cash offerings and undesignated checks will be used to support the Chapel's PathWays program, which offers students opportunities to discern God's call through study, artistic expression, counsel, service, and Christian community.

**SERMONS AVAILABLE**—Each week, a downloadable PDF, podcast, and webcast of sermons are available on the Chapel's website, [chapel.duke.edu](http://chapel.duke.edu).

**DUKE CHAPEL EVENT EMAIL LIST**—If you would like to receive emails about upcoming events sponsored by Duke Chapel, such as concerts, dialogues, special worship services, and more, please [chapel.duke.edu](http://chapel.duke.edu) and sign up via the link on the homepage under "Upcoming Events."

**BROADCASTS**—Gifts to the Chapel Annual Fund support broadcasts of Sunday services live every week over AM 620 WDNC and rebroadcast a week later on AM 680 WPTF at 10:00 a.m. Streaming video of the services are available on the web at [chapel.duke.edu](http://chapel.duke.edu). The services are broadcast live on patient TV channel 12 in Duke Hospital. If you would like to support media ministry, click on "make a gift" on the Chapel website.



## THE CONGREGATION AT DUKE UNIVERSITY CHAPEL

919-684-3917 • [www.congregation.chapel.duke.edu](http://www.congregation.chapel.duke.edu)

*The following Congregation opportunities are open to all.*

**SUMMER CHRISTIAN EDUCATION**—Weekly Christian education is offered on Sunday mornings from 9:45 a.m. to 10:45 a.m. in the Biddle Music Building. New participants are welcome any time.

- Wee Praise: For children ages 0-3 with parents/caregivers in 102 Biddle
- Children/Youth Choir: For children age 4 and up and youth in 101 Biddle
- Adult/Youth Class: Bible Study on the Acts of the Apostles in 104 Biddle

**BACK PEW COLLECTION**—Today and July 19, the Mission Committee will be collecting clothing for the Episcopal Farmworker Ministry, which provides physical and spiritual support to North Carolina Farmworkers. The ministry currently needs new or used lightweight pants, lightweight long sleeve shirts, hats, work gloves, sunscreen, and small sizes of men's toiletries. Donations may be left in the lobby of Baldwin Auditorium; financial gifts may be given in the offering with checks having "Congregation at Duke Chapel Farmworker Ministry" noted on the memo line.

**FAREWELL LUNCH**—A farewell lunch for The Rev. Brad Troxell will be held Sunday, July 26, immediately following worship at Asbury Methodist Church, located at the corner of West Markham and Clarendon Streets. Please inform the Congregation office at 919-684-3917 or [congregation@duke.edu](mailto:congregation@duke.edu) by July 20 to RSVP.

**INTER-GENERATIONAL CAMPING**—The youth of the Congregation are hosting a night of camping at nearby Lake Michie, Friday, July 31–Saturday, August 1. For more details and to RSVP, please contact Brad Troxell at 919-684-3917 or [brad.troxell@duke.edu](mailto:brad.troxell@duke.edu) by July 15.

**SATURDAY SERVICE PROJECT**—Volunteers are needed for a gleaning project on Saturday, July 18, from 9:00 a.m. to 12:00 noon with the Society of St. Andrew. Gleaning is the practice of collecting produce from a field after it has been commercially harvested. Please contact the Congregation office if you are available to participate. The location and directions will be announced closer to the service date.

**BACK-TO-SCHOOL SALES**—Whether or not you have children, please consider shopping back-to-school sales. The Mission Committee will be collecting school supplies for two Durham high schools on August 2 and 9. Items most in need include loose-leaf paper, spiral one-subject notebooks, three-ring binders, pens, colored pencils, and markers.

**ENews**—The Congregation at Duke Chapel publishes a weekly email announcing fellowship events, service opportunities and Christian education classes. If you would like to receive this weekly newsletter, please email [congregation@duke.edu](mailto:congregation@duke.edu).

# Morning Glory, Starlit Sky

194

1. Morn - ing glo - ry, star - lit sky, soar - ing  
 2. O - pen are the gifts of God, gifts of  
 3. Love that gives, gives ev - er - more, gives with  
 4. Drained is love in mak - ing full, bound in  
 5. There - fore he who shows us God help - less  
 6. Here is God: no mon - arch he, throned in

mu - sic, schol - ars' truth, flight of swal - lows,  
 love to mind and sense; hid - den is love's  
 zeal, with ea - ger hands; spares not, keeps not,  
 set - ting oth - ers free, poor in mak - ing  
 hangs up - on the tree, and the nails and  
 eas - y state to reign; here is God, whose

au - tumn leaves, mem - ory's trea - sure, grace of youth:  
 ag - o - ny, love's en - deav - or, love's ex - pense.  
 all out - pours, ven - tures all, its all ex - pends.  
 man - y rich, weak in giv - ing power to be.  
 crown of thorns tell of what God's love must be.  
 arms of love, ach - ing, spent, the world sus - tain.

WORDS: W. H. Vanstone, 1980 (1 Cor. 13:7)

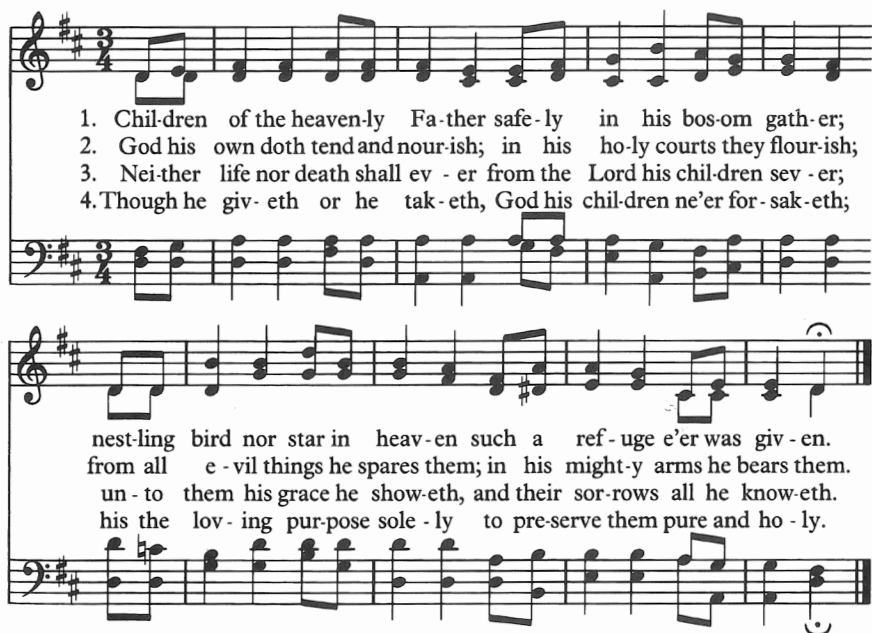
MUSIC: *Geistreiches Gesangbuch*, 1704; arr. by John Lees, 1824; harm. by John B. Wilkes, 1861

MONKLAND

77.77

Words by permission of J.W. Shore Music

# Children of the Heavenly Father 141



1. Chil-dren of the heav-en-ly Fa-ther safe-ly in his bos-om gath-er;  
 2. God his own doth tend and nour-ish; in his ho-ly courts they flour-ish;  
 3. Nei-ther life nor death shall ev - er from the Lord his chil-dren sev - er;  
 4. Though he giv-eth or he tak-eth, God his chil-dren ne'er for-sak-eth;

nest-ling bird nor star in heav-en such a ref-uge e'er was giv-en.  
 from all e - vil things he spares them; in his might-y arms he bears them.  
 un - to them his grace he show-eth, and their sor-rows all he know-eth.  
 his the lov-ing pur-pose sole - ly to pre-serve them pure and ho - ly.

WORDS: Caroline V. Sandell-Berg, 1855; trans. by Ernst W. Olson, 1925 TRYGGARE KAN INGEN VARA  
 MUSIC: Swedish melody 88.88

Trans. © 1925, renewed 1953 Augsburg/Fortress



# Lift Up Your Heads, Ye Mighty Gates 213

1. Lift up your heads, ye might - y gates;  
 2. Fling wide the por - tals of your heart;  
 3. Re - deem - er, come, with us a - bid;  
 4. Thy Ho - ly Spir - it lead us on

be - hold, the King of glo - ry waits;  
 make it a tem - ple, set a - part  
 our hearts to thee we o - pen wide;  
 un - til our glo - rious goal is won;

the King of kings is draw - ing near;  
 from earth - ly use for heaven's em - ploy;  
 let us thy in - ner pres - ence feel;  
 e - ter - nal praise, e - ter - nal fame

the Sav - ior of the world is here!  
 a - dorned with prayer and love and joy.  
 thy grace and love in us re - veal.  
 be of - fered, Sav - ior, to thy name!

WORDS: Georg Weissel, 1642; trans. by Catherine Winkworth, 1855 (Ps. 24)  
 MUSIC: *Psalmodia Evangelica*, 1789

TRURO  
LM

---

#### FOR WORSHIPERS AND VISITORS

† Prayer requests may be emailed to chapel-prayers@duke.edu.

† Tours of Duke Chapel are suspended until the nave re-opens.

† Hearing assistance units are available in the lobby of Baldwin Auditorium. See the attendant if you would like to use one of our large-print bulletins for the worship service.

#### FOR FAMILIES AND CHILDREN

† Children 4 and younger are invited to the nursery located in the Baldwin basement, beginning at 10:50 a.m. each week. Capacity is limited. Parents are welcome to feed or change infants; pagers are available for parents to keep with them during worship.

† Children's bulletins are available from the ushers, and Activity Bags are available in the entryway of Baldwin for children 5 or younger. Please return the bags at the end of the service.

*We invite you to consider joining the Congregation at Duke Chapel. The Congregation is an interdenominational church with a variety of vibrant ministries, including discipleship and spiritual formation (for children, youth, and adults), mission and outreach, and pastoral care. Please email [congregation@duke.edu](mailto:congregation@duke.edu) or call 919-684-3917 for information.*



Please continue to pray for the Chapel and all those working on its restoration. Photo Credit: Ray Walker,  
Staff Architect and Project Manager, Duke Facilities Management



## DUKE UNIVERSITY CHAPEL

*Duke Chapel is a Christian church of an unusually interdenominational character, with a tradition of stirring music, preaching, and liturgy. It is also a grand building, suitable for hosting major events in the life of the University and its members; it further acts as a moderator for the diversity of religious identity and expression on campus. We welcome you to our life of worship, learning, dialogue, and service.*

chapel.duke.edu • Box 90974, Durham, NC 27708 • 919-684-2572

### STAFF OF DUKE UNIVERSITY CHAPEL

The Rev. Dr. Luke Powery

*Dean of the Chapel*

#### Ministry

Dr. Christy Lohr Sapp

*Associate Dean for Religious Life*

Mr. Jack Adams

*Interim Worship Coordinator*

Dr. Adam Hollowell

*Director of Student Ministry*

The Rev. Bruce Puckett

*Director of Community Ministry*

Mr. Joshua Lazard

*C. Eric Lincoln Minister for Student Engagement*

Ms. Gerly Ace

*Staff Specialist for Student Ministry*

#### Music

Dr. Rodney Wynkoop

*Director of Chapel Music*

Dr. Robert Parkins

*University Organist*

Mr. Christopher Jacobson

*Chapel Organist*

Dr. Brian Schmidt

*Assistant Conductor and Administrative Coordinator of Chapel Music*

Mr. John Santoianni

*Curator of Organs and Harpsichords*

Mr. J. Samuel Hammond

*University Carillonneur*

Mr. Michael Lyle

*Staff Assistant for Chapel Music*

#### Administration

Ms. Joni Harris

*Assistant to the Dean*

Ms. Adrienne Koch

*Communications Specialist*

Mr. James Todd

*Multimedia Manager for Media Ministry*

Ms. Sara Clark

*Chapel Events and Wedding Coordinator*

Ms. Lisa Moore

*Accounting Specialist and Office Coordinator*

Mr. Oscar Dantzler

*Housekeeper*

#### *Staff of the Congregation at Duke University Chapel*

The Rev. Dr. Carol Gregg

*Pastor*

The Rev. Brad Troxell

*Associate Pastor*

Ms. Phyllis Snyder

*Children's Pastor*

Mr. Nelson Strother

*Administrative Assistant*

---

### PRAYER CARD

Thank you for worshiping with us. We invite you to write a prayer request in the space below and please place it in the offering plate. It will be offered up to God in confidence by the Chapel team this week.