



Duke
UNIVERSITY
CHAPEL

BRIDGING FAITH & LEARNING

SERVICE OF WORSHIP
Fourteenth Sunday after Pentecost
Orientation Sunday
Sunday, August 25, 2024, 11:00 a.m.



Kevin Goldfarb, 2019.

This morning, we extend heartfelt welcome to students who have recently arrived on campus. Whether returning or starting classes for the first time at Duke, we hope that the Chapel can serve as an integral part of your Duke experience. Amid exciting and sometimes difficult life transitions, we pray that the Chapel will be a place where you come to encounter Christ—and to discover a life shaped by joy, friendship, purpose, and faithfulness. We desire to walk with you in your journey of faith, as we seek together to respond to God’s all-inclusive love at Duke, in Durham, and in the world.

Gathering

Carillon

Prelude

Tento do quarto tom natural

Manuel Rodrigues Coelho
(c. 1555–1635)

Introit

From the Rising of the Sun

M. Susan Brown

From the rising of the sun,
to its going down again,
let the name of the Lord be praised.

—*Psalms 113:2–3*

Greeting and Call to Worship

*Gathering Hymn | UMH 61

Come, Thou Almighty King

ITALIAN HYMN

*Prayer of Confession and Words of Assurance | In unison:

Most merciful God, we confess that we have sinned against you in thought, word, and deed, by what we have done, and by what we have left undone. We have not loved you with our whole heart; we have not loved our neighbors as ourselves. We are truly sorry, and we humbly repent. For the sake of your Son Jesus Christ, have mercy on us and forgive us; that we may delight in your will, and walk in your ways to the glory of your name. Amen.

The minister offers words of assurance.

*Peace | All exchange signs and words of God's peace.

Minister: The peace of Christ be with you.

People: **And also with you.**

*All rise as able

Proclamation

Prayer for Illumination | In unison:

Lord Jesus Christ, you alone have the words of eternal life: send your Holy Spirit to grant us wisdom and understanding from your holy word; in your name we pray, Amen.

Old Testament Lesson | OT pages 205–206 in pew Bibles.

Joshua 24:1–2a, 14–18

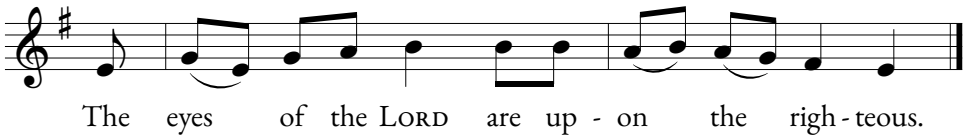
Lector: The word of the Lord.

People: **Thanks be to God.**

Psalmody | The refrain is introduced by the choir, then sung by all where indicated.

Psalm 34:15–22

refrain: Bruce Bengtson



The eyes of the LORD are upon the righteous,
and God's ears are open to their cry.
The face of the LORD is against those who do evil,
to erase the remembrance of them from the earth.
The righteous cry, and the LORD hears them
and delivers them from all their troubles.
The LORD is near to the brokenhearted
and saves those whose spirits are crushed. *Refrain*

Many are the troubles of the righteous,
but the LORD delivers them from every one.
God will keep safe all their bones;
not one of them shall be broken.
Evil will bring death to the wicked
and those who hate the righteous will be punished.
O Lord, you redeem the life of your servants,
and those who put their trust in you will not be punished. *Refrain*

*Gospel Lesson | NT page 93 in pew Bibles.

John 6:56–69

Lector: The word of the Lord.

People: **Thanks be to God.**

Sermon

The Freedom to Choose

Response

*Response Hymn | See hymn printed on insert.

Open Wide the Doors of Mercy

RUSTINGTON

Student Ministry Announcement

Call to Prayer

Minister: The Lord be with you.

People: **And also with you.**

Minister: Let us pray.

Prayers of the People | The congregation responds to each petition:

People: **Hear our prayer.**

Offertory Anthem

Fight the Good Fight

John Gardner
(1917–2011)

Fight the good fight with all thy might,
Christ is thy strength, and Christ thy right;
lay hold on life, and it shall be thy joy and crown eternally.

Run the straight race through God's good grace,
lift up thine eyes and seek his face;
life with its way before us lies, Christ is the path, and Christ the prize.

Cast care aside, lean on thy guide;
his boundless mercy will provide;
trust, and thy trusting soul shall prove Christ is its life, and Christ its love.

Faint not, nor fear, his arms are near;
he changeth not, and thou art dear;
only believe and thou shalt see that Christ is all in all to thee. Amen.

—*J. S. B. Monsell (1811–1875)*

*Doxology

LASST UNS ERFREUEN

**Praise God from whom all blessings flow;
Praise God, all creatures here below; Alleluia, Alleluia!
Praise God above, ye heavenly host,
Praise Father, Son and Holy Ghost. Alleluia, Alleluia,
Alleluia, Alleluia, Alleluia!**

Thanksgiving

*Prayer of Thanksgiving

*The Lord's Prayer | All are encouraged to pray the Lord's Prayer in the language of their choosing.

**Our Father, who art in heaven, hallowed be thy name.
Thy kingdom come, thy will be done on earth as it is in heaven.
Give us this day our daily bread.
And forgive us our trespasses, as we forgive those who trespass against us.
And lead us not into temptation, but deliver us from evil.
For thine is the kingdom, and the power, and the glory, forever.
Amen.**

Sending Forth

*Choral Benediction

Bwana awabariki

Swahili folk hymn

Bwana awabariki,
Bwana awabariki,
Bwana awabariki milele.

*May God grant you a blessing,
may God grant you a blessing,
may God grant you a blessing evermore.*
—*traditional Swahili*

*Benediction

*Sending Hymn | UMH 577

God of Grace and God of Glory

CWM RHONDDA

Postlude

Allegro maestoso e vivace (Sonata IV)

Felix Mendelssohn-Bartholdy
(1809–1847)

Carillon

Memorial Chapel Communion | Immediately following the postlude, a brief communion service will be held in Memorial Chapel; worship guides for the service are available near the entrance. Following communion, the minister will be available to offer prayers and anointing.

TODAY IN WORSHIP

Presiding Ministers

Bruce Puckett *Assistant Dean, Duke University Chapel*
Racquel Gill *Minister for Intercultural Engagement, Duke University Chapel*

Preacher

Luke A. Powery *Dean, Duke University Chapel*

Lectors

Kate Redden *Chapel Scholar; Divinity '25*
Riley Hamp *Chapel Scholar; Trinity '25*

Musicians

Duke Chapel Choir *Choir*
Zebulon Highben *Director of Chapel Music, Duke University Chapel*
Robert Parkins *University Organist, Duke University*
Chad Fothergill *Chapel Organist, Duke University Chapel*
Katherine Johnson *Organ Scholar, Duke University Chapel*
Mitchell Eithun *Chapel Carillonneur, Duke University Chapel*

Head Ushers

Ken Arneson *Member, Congregation at Duke Chapel*

James Ferguson *Member, Congregation at Duke Chapel*

Today's Offering | All of today's cash offerings and checks written to Duke University Chapel will be used to support the Chapel's student engagement programming. Send checks to: Duke University Chapel, Box 90974, Durham, NC 27708-0974. Give online at chapel.duke.edu/offering.

Today's Flowers | The flowers for the worship service today are given to the glory of God by the Nan and Taylor Cole Chapel Endowment.

ENGAGE

University Prayer of Thanksgiving | Each week, we focus on a different campus unit, school, or department for whom to give thanks to God for their service and contributions to the wider university community and beyond. Today, we give thanks for students new to Duke.

Lunch and LocoPops for Students Today | Immediately following the service, students are invited to meet Chapel ministers and enjoy lunch and LocoPops. Look for the tent on the Memorial Lawn between the Chapel and the Divinity School. If you get lost, ask someone wearing a blue or white robe.

Choir Auditions | You are invited to sing with the Duke Chapel Choir and Duke Chapel Evensong Singers. The Chapel Choir rehearses on Wednesday evenings and sings for weekly Sunday morning services. The Evensong Singers rehearse on Monday evenings and sing for Sunday afternoon services on alternate weeks. Both choirs are open to Duke students, staff, and community members by audition. For more information or to schedule an audition, contact the Chapel Music office at chapelmusic@duke.edu or 919-684-3898.

Choral Evensong This Afternoon | Our service of Choral Evensong, today at 4:00 p.m., follows the liturgy of the *Book of Common Prayer* and features from the English cathedral tradition, led by the Chapel's Evensong Singers. This service will draw upon the music of the British composer C. V. Stanford, including his *Evening Service in C*.

ENGAGE

Join a Religious Life Group | Duke has more than twenty recognized Religious Life groups on campus, including Buddhist, Catholic, Hindu, Jewish, Latter-day Saints, Muslim, and Protestant organizations and groups. In partnership with the Division of Student Affairs, the Chapel convenes, supports, and advocates for these groups. See the full list of Religious Life groups and how to be in touch with them at chapel.duke.edu/religiouslife.

Apply to Be a Chapel Scholar | Chapel Scholars are students from across Christian traditions who seek to discern God's calling through study, community, and mentorship. Scholars are eligible for grants for service and learning opportunities. Learn more and apply at chapel.duke.edu/scholars.

Say the Thing | The Chapel's "Say the Thing" bridges the gap between old and new, physical and virtual, and contemplative and playful, and is a collaboration between Duke Chapel and the Kenan Institute for Ethics. It strives to twist technologies in order to give students community and frameworks to wrestle with life's hard questions and to question their own answers. Learn more and get involved by following "Say the Thing" on Instagram @say.the.thing.

Bach Cantata Concert | Johann Sebastian Bach's church cantatas are often considered the pinnacle of German sacred music, works whose theological depth and emotional resonance touch deep places in the human soul. In this year's Bach Cantata Series, we follow Bach through the various stages of his career, from his earliest appointments in Arnstadt and Mühlhausen, to Weimar, and to the culmination of his work in Leipzig. The theme of the first concert of the year is "Arnstadt and Mühlhausen: Chamber Cantatas." It will be held Sunday, September 15, at 5:00 p.m. in Duke Chapel and be preceded by a pre-concert lecture at 4:00 p.m. in Goodson Chapel at Duke Divinity School. There is no charge for admission. See the full music schedule for the year at chapel.duke.edu/music.

Sunday Morning Classes | Sunday morning Christian Education classes are available for all ages from 9:45–10:45 a.m., with coffee and refreshments provided at 9:30 a.m. Classes meet in the lowest level of the Westbrook building. New participants are welcome at any time. Contact congregation@duke.edu for additional information.

RESPONSE HYMN | Open Wide the Doors of Mercy



1. O - pen wide the doors of mer - cy, o - pen wide the
2. Keep us mind - ful that your chil - dren live in lands both
3. There are ones who weep for jus - tice in a world of
4. Make our scope of vi - sion broad - er, through a lens as



doors of grace, o - pen win-dows of for-give-ness, let - ting
far and near; man - y fac - es, man - y cust-oms, ev - 'ry
grace de - nied; may we hear their cry for mer - cy as though
Christ would see. Draw this fam - 'ly cir - cle wid - er as we



love flow through this place. Fill our hearts with deep com -
per - son you hold dear. Though we fail to rec - og -
Christ him - self has cried. There are ones who wan - der,
live more lov - ing - ly. O - pen wide the doors of



pas - sion as we gath - er here to - day. Turn our words and
nize them, still you name them as your own. Clear the fog that
hope-less, through a land - scape of des - pair; may our hands reach
mer - cy, o - pen wide the doors of grace, o - pen win - dows



prayers to ac - tion, giv - ing sub - stance to our faith.
clouds our see - ing, let us share the love you've shown.
out with kind - ness and a touch to show we care.
of com - pas - sion, far be - yond this time and place.

Text: Brad Croushorn

Music: Charles Hubert Hastings Parry (1848–1918)

RUSTINGTON

8 7 8 7 D

ACCESSIBILITY

Hearing assistance units, as well as large-print worship guides and hymnals, are available at the AV console in the rear of the Chapel. There, you can also find directions to download a listen-assist app on your phone. Please let us know if you need other accommodations by approaching a minister or usher, or email us at dukechapel@duke.edu.

LET'S KEEP IN TOUCH

We would like to get to know you. What are your questions? What is your story? Take a moment to fill out a very brief form and a Chapel minister or other staff member will contact you soon. Scan the QR code or visit chapel.duke.edu/connect.



*The Congregation
at Duke Chapel*

chapel.duke.edu
919-681-9488

congregation.chapel.duke.edu
919-684-3917

401 Chapel Drive
Campus Box 90974
Durham, NC 27708

The Congregation at Duke University Chapel joyfully welcomes all persons regardless of age, race, class, origin, sexual orientation, gender identity, or any other distinction and invites membership and participation in all of its ministries.

dukechapel@duke.edu

Please email congregation@duke.edu to receive the weekly eNews.

Connect with us



@DukeChapel
#FindSanctuary