



Duke
UNIVERSITY
CHAPEL

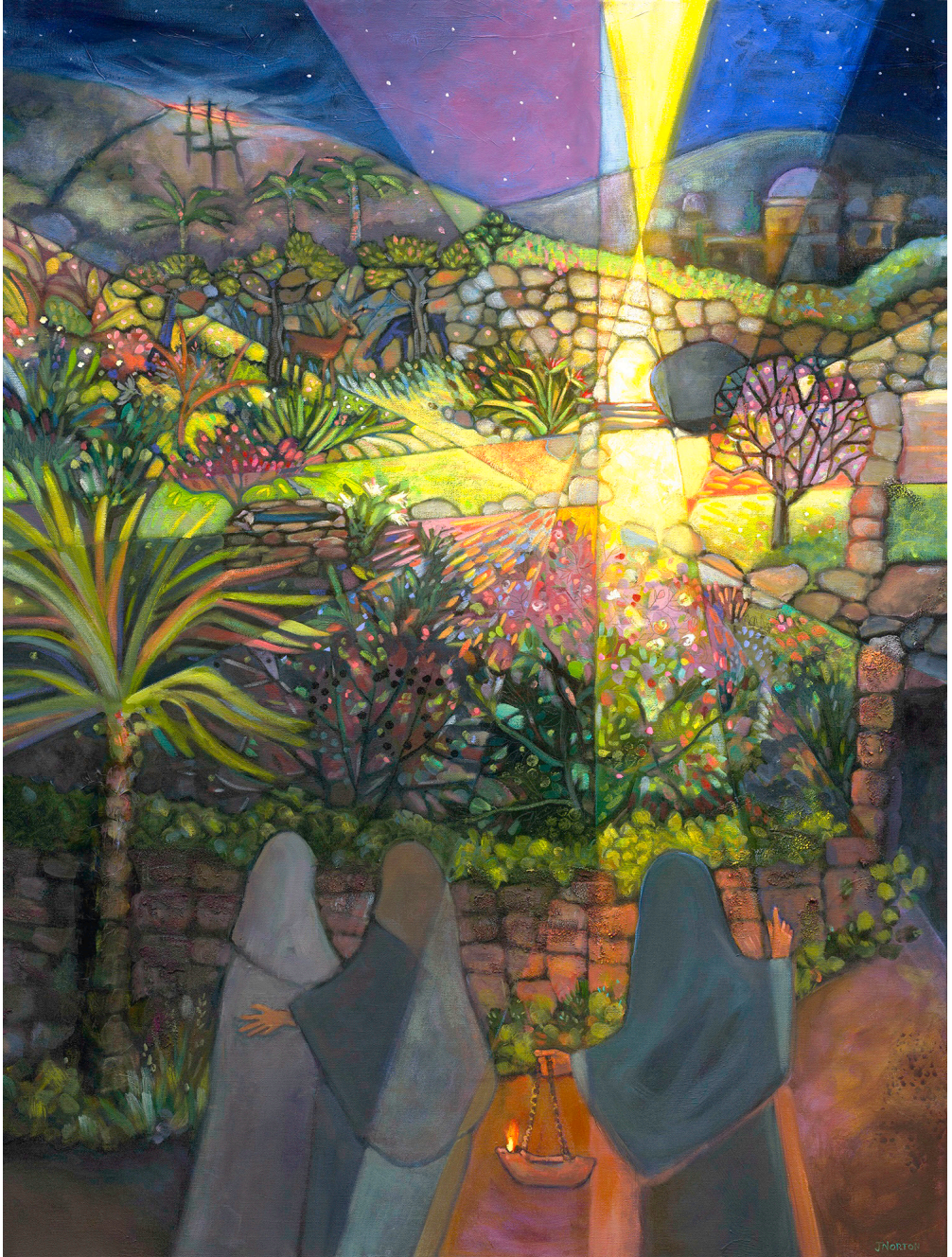
BRIDGING FAITH & LEARNING

SERVICE OF WORSHIP

Resurrection of Our Lord

Easter Sunrise

Sunday, March 31, 2024, 6:30 a.m.



Easter Morning and the Light of Resurrection, Jen Norton, 2019

Gathering

Prelude

*All rise as able

*Greeting

Leader: Alleluia! Christ is risen!

People: He is risen indeed! Alleluia!

*Hymn

Christ the Lord Is Risen Today

EASTER HYMN

Christ the Lord is risen today, Alleluia!
Earth and heaven in chorus say, Alleluia!
Raise your joys and triumphs high, Alleluia!
Sing, ye heavens, and earth reply, Alleluia!

Love's redeeming work is done, Alleluia!
Fought the fight, the battle won, Alleluia!
Death in vain forbids him rise, Alleluia!
Christ has opened paradise, Alleluia!

Lives again our glorious King, Alleluia!
Where, O death, is now thy sting? Alleluia!
Once he died our souls to save, Alleluia!
Where's thy victory, boasting grave? Alleluia!

Soar we now where Christ has led, Alleluia!
Following our exalted Head, Alleluia!
Made like him, like him we rise, Alleluia!
Ours the cross, the grave, the skies, Alleluia!

Proclamation

Prayer for Illumination | In unison:

Holy God, through Christ's resurrection you lifted us up and filled us with rejoicing. Lord, open our minds that we may know him, and enrich us with your gifts that we may follow him in his risen life. Amen.

Old Testament Lesson

Isaiah 25:6–9

Lector: The word of the Lord.

People: Thanks be to God.

New Testament Lesson

1 Corinthians 15:1–11

Lector: The word of the Lord.

People: Thanks be to God.

*Gospel Lesson

Mark 16:1–8

Lector: The word of the Lord.

People: Thanks be to God.

Sermon

Those Three Women

Response

Call to Prayer

Minister: The Lord be with you.

People: And also with you.

Minister: Let us pray.

Prayers of the People | The congregation responds to each petition:

People: Hear our prayer.

*The Lord's Prayer | All are encouraged to pray the Lord's Prayer in the language of their choosing.

Our Father, who art in heaven, hallowed be thy name.
Thy kingdom come, thy will be done on earth as it is in heaven.
Give us this day our daily bread.
And forgive us our trespasses,
as we forgive those who trespass against us.
And lead us not into temptation, but deliver us from evil.
For thine is the kingdom, and the power, and the glory, forever.
Amen.

Sending Forth

*Benediction

*Closing Hymn

Come, Ye Faithful, Raise the Strain

ST. KEVIN

Come, ye faithful, raise the strain of triumphant gladness;
God hath brought forth Israel into joy from sadness;
Loosed from Pharaoh's bitter yoke Jacob's sons and daughters,
Led them with unmoistened foot through the Red Sea waters.

'Tis the spring of souls today; Christ hath burst his prison,
And from three days' sleep in death as a sun hath risen;
All the winter of our sins, long and dark, is flying
From his light, to whom we give laud and praise undying.

Neither could the gates of death, nor the tomb's dark portal,
Nor the watchers, nor the seal hold thee as a mortal;
But today amidst the twelve thou didst stand, bestowing
That thy peace which evermore passeth human knowing.

"Alleluia!" now we cry to our King immortal,
Who, triumphant, burst the bars of the tomb's dark portal;
"Alleluia!" with the Son, God the Father praising,
"Alleluia!" yet again to the Spirit raising.

Postlude

TODAY IN WORSHIP

Presiding Minister

Kathryn Lester-Bacon *Director of Religious Life, Duke University Chapel*

Preacher

Ellen F. Davis *Amos Ragan Kearns Distinguished Professor of Bible and Practical Theology, Duke Divinity School*

Lector

Alessandra Waggoner *Chapel Scholar, Trinity '24*

Garrett Kaiser *Chapel Scholar, Divinity '25*

Musicians

Paul Neebe *Trumpet, Amalgam Brass*

Timothy Altman *Trumpet, Amalgam Brass*

Kim Van Pelt *Horn, Amalgam Brass*

Mike Kris *Trombone, Amalgam Brass*

Steve Truckenbrod *Tuba, Amalgam Brass*

Alissa Roca *Cantor*

Today's Guest Preacher | Dr. Ellen F. Davis is the Amos Ragan Kearns Distinguished Professor of Bible and Practical Theology at Duke Divinity School. The author of eleven books and many articles, her research interests focus on how biblical interpretation bears on the life of faith communities and their response to urgent public issues, particularly the ecological crisis and interfaith relations. *Scripture, Culture, and Agriculture: An Agrarian Reading of the Bible* (Cambridge University Press, 2009), integrates biblical studies with a critique of industrial agriculture and food production. *Biblical Prophecy: Perspectives for Christian Theology, Discipleship and Ministry* (Westminster John Knox, 2014), explores the prophetic role and word across both Testaments of the Christian Bible. Her most recent books are *Preaching the Luminous Word* (Eerdmans, 2016), a collection of her sermons and essays, and *Opening Israel's Scriptures* (Oxford, 2019), a comprehensive theological reading of the Hebrew Bible/Old Testament. A lay Episcopalian, she has long been active as a theological consultant within the Anglican Communion. Her current work explores the arts as modes of scriptural interpretation.

Liturgical Acknowledgments | Prayer for Illumination. Adapted from *Book of Common Worship*, Daily Prayer, Westminster John Knox Press, © 1993.

ENGAGE

University Prayer of Thanksgiving | Each week, we focus on a different campus unit, school, or Duke affiliate for whom to give thanks to God. Today, we give thanks for Julian Abele, John Donnelly, Charles H. Crowther, G. Owen Bonawit, S. Charles Jaekle, Hugh Doherty, Charles Keck, and all the artisans who used their gifts and talents to bring about this Chapel to the praise and glory of God.

Choral Evensong Today | Our celebration of Easter continues today at 4:00 p.m. with a festal Choral Evensong led by Duke Evensong Singers. Music will include Herbert Howells' *Te Deum Laudamus* and the Evening Canticles from his *Gloucester Service*. Celebratory music by C.V. Stanford includes Psalm 150 and the anthem *Ye Choirs of New Jerusalem*. All are welcome.

Bach's St. John Passion | First performed 300 years ago on Good Friday, April 7, 1724, the *St. John Passion* is renowned for its dramatic choruses, expressive arias, and compelling narrative. It sets text from the Gospel of John, chapters 18 and 19, composed in two parts: Part I ends with Peter's denial of Jesus, and Part II concludes with Christ's burial. The performance will be Sunday, April 7, at 4:00 p.m. Purchase tickets at tickets.duke.edu.

Theology Underground | The final meeting of the semester for our Theology Underground discussion series will take up the topic "I Talk to God, and I Meditate Too: A Conversation with a Baptist and Buddhist" with special guest Rev. Prasert Ammartek, Buddhist Chaplain at Duke. The discussion will be Tuesday, April 9, from 6:30 to 8:00 p.m. in the Center for Sexual and Gender Diversity in the Bryan Center. Learn more and listen to recordings of past conversations at chapel.duke.edu/theologyunderground.

Adult Forum Returns April 7 | Before worship on Sunday mornings, the Adult Forum offers presentations and discussions on a wide range of topics, including biblical studies, current social issues, and the work of mission agencies. The Adult Forum meets in 0013 Westbrook and over Zoom. On April 7, Daniel Castelo, Ph.D., Duke Divinity professor of Theology and Methodist Studies, will present, "Why is the Spirit Neglected?"

ENGAGE

Historic Stagville Visit | Join the Congregation at Duke Chapel's Fellowship Committee on Saturday, April 13, for a guided tour of Stagville, the historic site of one of North Carolina's largest plantations, where 900 people were enslaved. The site is now dedicated to teaching about the lives and work of those enslaved people. The tour will be followed by prayer and discussion led by the Congregation's Pastoral Assistant for Discipleship and Community, Morgan Dynes. To learn more, please email congregation@duke.edu.

Centennial Concert Celebrates Mary Lou Williams' Music and Legacy | As part of Duke University's Centennial Celebration, the Mary Lou Williams Center for Black Culture, Duke Arts, and Duke Chapel will present "Our First Lady of Jazz" on Sunday, April 14, at 4:00 p.m. in the Chapel. This dynamic concert celebrating the pioneering composer Mary Lou Williams will feature a wide range of Black sacred music, from vocal jazz and gospel to spirituals, classical, and the blues. For the performance, the Duke Chapel Choir and the North Carolina Central University Vocal Jazz Ensemble will join forces with guest artists. Free admission. Learn more at chapel.duke.edu/marylouconcert.

PathWays Fellowship | The PathWays Fellowship is a year-long (August 15 to May 15) residential program for students in any of Duke Divinity School's graduate programs that offers opportunities for vocational exploration, mentorship, service, and formation deeply rooted in the Durham community and the fellows' Christian traditions. Learn more and apply by April 15 at chapel.duke.edu/pathways.

ChorWorks Summer Program in Early Sacred Music | Through Duke Chapel, the nonprofit organization ChorWorks is offering their summer program "Henry Purcell—England's Orpheus" from June 10 to 16, at Duke University. The workshop is led by Dr. Philip Cave, executive director of ChorWorks and conductor-in-residence at Duke Chapel. Those invited to the program will receive a scholarship covering the full cost of tuition and housing. Learn more and apply at chapel.duke.edu/chorworks.

Sunday Morning Classes | Sunday morning Christian Education classes are available for all ages from 9:45–10:45 a.m., with coffee and refreshments provided at 9:30 a.m. Classes meet in the lowest level of the Westbrook building. New participants are welcome at any time. Please contact congregation@duke.edu for additional information.

ACCESSIBILITY

Large-print worship guides are available. Please let us know if you need accommodations by approaching a minister, or emailing us at dukechapel@duke.edu.

LET'S KEEP IN TOUCH

We would like to get to know you. What are your questions? What is your story? Take a moment to fill out a very brief form and a Chapel minister or other staff member will contact you soon. Scan the QR code or visit chapel.duke.edu/connect.



Duke
UNIVERSITY
CHAPEL



*The Congregation
at Duke Chapel*

chapel.duke.edu
919-681-9488

401 Chapel Drive
Campus Box 90974
Durham, NC 27708

dukechapel@duke.edu

Connect with us



@DukeChapel
#FindSanctuary

congregation.chapel.duke.edu
919-684-3917

The Congregation at Duke University Chapel joyfully welcomes all persons regardless of age, race, class, origin, sexual orientation, gender identity, or any other distinction and invites membership and participation in all of its ministries.

Please email congregation@duke.edu to receive the weekly eNews.